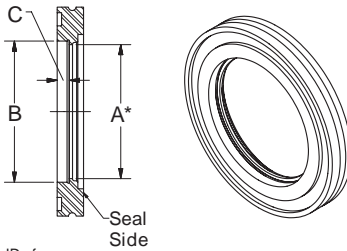


Flange, Bored

in./(mm)



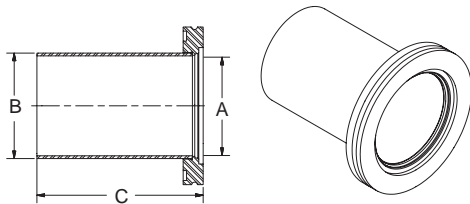
* Given as ID of suggested tubing

- Stainless steel type 304
- For internal weld
- Infinitely rotatable
- Made for inch tube and pipe diameters
- Use with clamps or rotatable bolt ring

Flange Size (ISO)	Nominal Bore	A	B	C	Part Number
NW 63	2½"	2.37 (60)	2.50 (64)	0.22 (6)	100760206
NW 80	3"	2.87 (73)	3.00 (76)	0.22 (6)	100760208
NW 100	4"	3.87 (98)	4.00 (102)	0.22 (6)	100760210
NW 160	6"	5.83 (148)	6.00 (152)	0.22 (6)	100760216
NW 200	8"	7.76 (197)	8.00 (203)	0.22 (6)	100760220
NW 250	10"	9.75 (248)	10.00 (254)	0.22 (6)	100760225
NW 320	12¾"	12.42 (315)	12.75 (324)	0.30 (8)	100760232
NW 400	16"	15.62 (397)	16.00 (406)	0.30 (8)	100760240
NW 500	20"	19.62 (498)	20.00 (508)	0.30 (8)	100760250

Flange, Long Weld Stub

in./(mm)

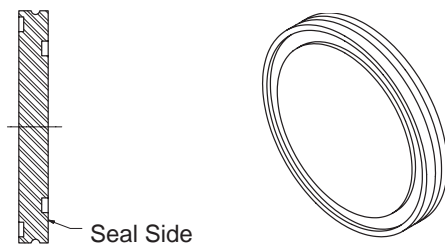


- Stainless steel type 304
- For butt weld
- Standard inch diameters
- Use with clamps or rotatable bolt ring

Flange Size (ISO)	Nominal Bore	A	B	C	Part Number
NW 63	2½"	2.37 (60)	2.50 (64)	3.94 (100)	100760406
NW 80	3"	2.87 (73)	3.00 (76)	3.94 (100)	100760408
NW 100	4" (.065" wall)	3.87 (98)	4.00 (102)	3.94 (100)	100760410
NW 100	4" (.083" wall)	3.87 (98)	4.00 (102)	3.94 (100)	100760411
NW 160	6"	5.83 (148)	6.00 (152)	3.94 (100)	100760416
NW 200	8"	7.76 (197)	8.00 (203)	3.94 (100)	100760420
NW 250	10"	9.75 (248)	10.00 (254)	3.94 (100)	100760425
NW 320	12¾"	12.42 (315)	12.75 (324)	3.94 (100)	100760432
NW 400	16"	15.62 (397)	16.00 (406)	3.94 (100)	100760440
NW 500	20"	19.62 (498)	20.00 (508)	3.94 (100)	100760450

Flange, Blank-Off

in./(mm)

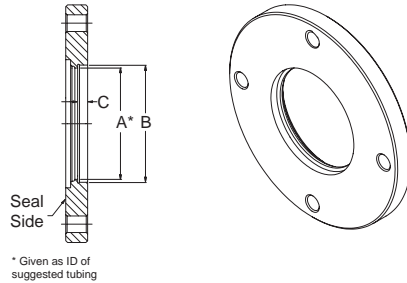


- Stainless steel type 304
- Infinitely rotatable
- To close off unused ports
- Use with clamps or rotatable bolt ring

Flange Size (ISO)	Part Number
NW 63	100760106
NW 80	100760108
NW 100	100760110
NW 160	100760116
NW 200	100760120
NW 250	100760125
NW 320	100760132
NW 400	100760140
NW 500	100760150

Flange, Bolted, Bored

in./(mm)

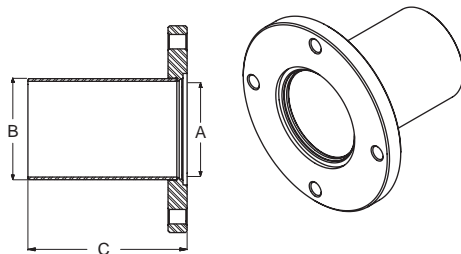


- Stainless steel type 304
- For use with bolts only
- For internal weld
- Made for inch tube and pipe diameters
- Tapped bolt holes on special order

Flange Size (ISO)	Nominal Bore	A	B	C	Part Number
NW 63	2½"	2.37 (60)	2.50 (64)	0.22 (6)	100762406
NW 80	3"	2.87 (73)	3.00 (76)	0.22 (6)	100762408
NW 100	4"	3.87 (98)	4.00 (102)	0.22 (6)	100762410
NW 160	6"	5.83 (148)	6.00 (152)	0.37 (10)	100762416
NW 200	8"	7.76 (197)	8.00 (203)	0.37 (10)	100762420
NW 250	10"	9.75 (248)	10.00 (254)	0.41 (11)	100762425
NW 320	12¾"	12.42 (315)	12.75 (324)	0.41 (11)	100762432
NW 400	16"	15.62 (397)	16.00 (406)	0.41 (11)	100762440
NW 500	20"	19.62 (498)	20.00 (508)	0.41 (11)	100762450
NW 630	24"	23.50 (597)	24.00 (610)	0.57 (15)	100762463

Flange, Bolted, Weld Stub

in./(mm)

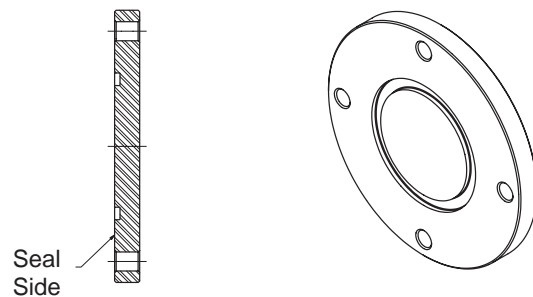


- Stainless steel type 304
- For butt weld
- For use with bolts only
- Made for inch tube and pipe diameters

Flange Size (ISO)	Nominal Bore	A	B	C	Part Number
NW 63	2½"	2.37 (60)	2.50 (64)	3.94 (100)	100762706
NW 80	3"	2.87 (73)	3.00 (76)	3.94 (100)	100762708
NW 100	4" (.065" wall)	3.87 (98)	4.00 (102)	3.94 (100)	100762710
NW 160	6"	5.83 (148)	6.00 (152)	3.94 (100)	100762716
NW 200	8"	7.76 (197)	8.00 (203)	3.94 (100)	100762720
NW 250	10"	9.75 (248)	10.00 (254)	3.94 (100)	100762725
NW 320	12¾"	12.42 (315)	12.75 (324)	3.94 (100)	100762732
NW 400	16"	15.62 (397)	16.00 (406)	3.94 (100)	100762740
NW 500	20"	19.62 (498)	20.00 (508)	3.94 (100)	100762750
NW 630	24"	23.50 (597)	24.00 (610)	3.94 (100)	100762763

Flange, Bolted, Blank

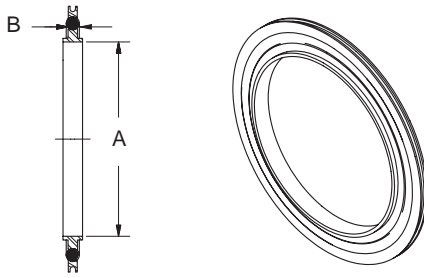
in./(mm)



- Stainless steel type 304
- To close off unused ports or for special boring
- For use with bolts only
- Tapped bolt holes on special order

Flange Size (ISO)	Part Number
NW 63	100760306
NW 80	100760308
NW 100	100760310
NW 160	100760316
NW 200	100760320
NW 250	100760325
NW 320	100760332
NW 400	100760340
NW 500	100760350
NW 630	100760363

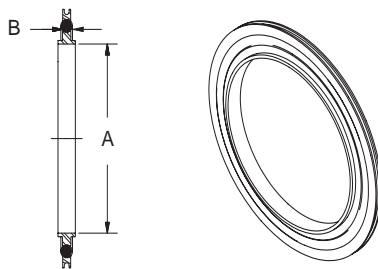
Seal, Centering Ring Assembly, Stainless Steel/Viton® in./(mm)



- Stainless steel centering ring
- Replaceable Viton O-Ring
- Aluminum spacer ring
- Rated to 150°C max

Flange Size (ISO)	A	B	Part Number
NW 63	2.63 (67)	0.15 (4)	100760506
NW 80	3.14 (80)	0.15 (4)	100760508
NW 100	3.89 (99)	0.15 (4)	100760510
NW 160	5.90 (150)	0.15 (4)	100760516
NW 200	8.26 (210)	0.15 (4)	100760520
NW 250	10.14 (258)	0.15 (4)	100760525
NW 320	12.30 (312)	0.22 (6)	100760532
NW 400	15.53 (395)	0.22 (6)	100760540
NW 500	19.51 (496)	0.22 (6)	100760550
NW 630	25.41 (645)	0.22 (6)	100760563

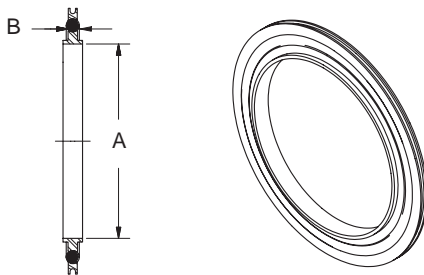
Seal, Centering Ring Assembly, Aluminum/Buna-N in./(mm)



- Aluminum centering ring
- Replaceable Buna-N O-Ring
- Aluminum spacer ring
- Rated to 80°C max.

Flange Size (ISO)	A	B	Part Number
NW 63	2.63 (67)	0.15 (4)	100760706
NW 80	3.14 (80)	0.15 (4)	100760708
NW 100	3.89 (99)	0.15 (4)	100760710
NW 160	5.90 (150)	0.15 (4)	100760716
NW 200	8.26 (210)	0.15 (4)	100760720
NW 250	10.14 (258)	0.15 (4)	100760725
NW 320	12.30 (312)	0.22 (6)	100760732
NW 400	15.53 (395)	0.22 (6)	100760740
NW 500	19.51 (496)	0.22 (6)	100760750
NW 630	25.41 (645)	0.22 (6)	100760763

Seal, Centering Ring Assembly, Aluminum/Viton® in./(mm)

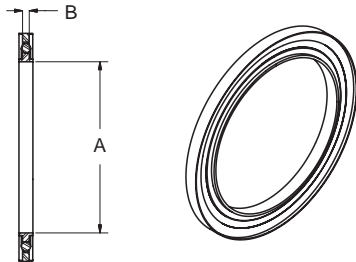


- Aluminum centering ring
- Replaceable Viton O-Ring
- Aluminum spacer ring
- Rated to 150°C max

Flange Size (ISO)	A	B	Part Number
NW 63	2.63 (67)	0.15 (4)	100760606
NW 80	3.14 (80)	0.15 (4)	100760608
NW 100	3.89 (99)	0.15 (4)	100760610
NW 160	5.90 (150)	0.15 (4)	100760616
NW 200	8.26 (210)	0.15 (4)	100760620
NW 250	10.14 (258)	0.15 (4)	100760625
NW 320	12.30 (312)	0.22 (6)	100760632
NW 400	15.53 (395)	0.22 (6)	100760640
NW 500	19.51 (496)	0.22 (6)	100760650
NW 630	25.41 (645)	0.22 (6)	100760663

Seal, Overpressure Assembly

in./(mm)

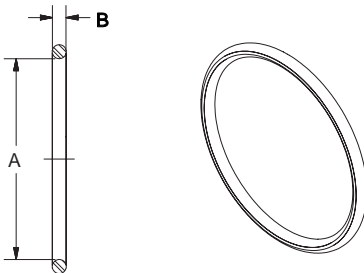


Flange Size (ISO)	A	B	Part Number
NW 80	3.14 (80)	0.15 (4)	100938657
NW 100	3.89 (99)	0.15 (4)	100938658
NW 160	5.90 (150)	0.15 (4)	100937685

- Stainless steel centering ring
- Replaceable Viton O-Ring
- Includes aluminum overpressure ring

Seal, Replacement O-Ring, Viton®

in./(mm)

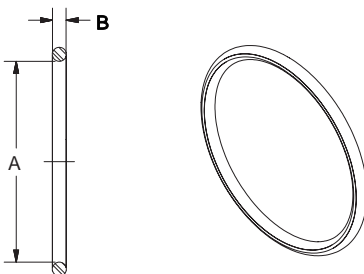


Flange Size (ISO)	Standard Number	A	B	Part Number
NW 63	2-336	2.85 (72)	0.21 (5)	100762006
NW 80	2-340	3.35 (85)	0.21 (5)	100762008
NW 100	2-346	4.10 (104)	0.21 (5)	100762010
NW 160	2-361	5.98 (152)	0.21 (5)	100762016
NW 200	2-371	8.48 (215)	0.21 (5)	100762020
NW 250	2-378	10.48 (266)	0.21 (5)	100762025
NW 320	2-454	12.48 (317)	0.28 (7)	100762032
NW 400	2-460	15.48 (393)	0.28 (7)	100762040
NW 500	2-468	19.46 (494)	0.28 (7)	100762050
NW 630	2-474	24.94 (634)	0.28 (7)	100762063

- Viton
- Standard US O-Ring sizes
- Bakeable to 150°C
- Replaceable seal for centering ring assembly

Seal, Replacement O-Ring, Buna-N

in./(mm)

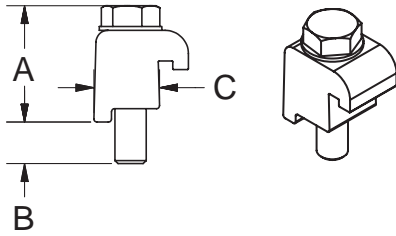


Flange Size (ISO)	Standard Number	A	B	Part Number
NW 63	2-336	2.85 (72)	0.21 (5)	100761906
NW 80	2-340	3.35 (85)	0.21 (5)	100761908
NW 100	2-346	4.10 (104)	0.21 (5)	100761910
NW 160	2-361	5.98 (152)	0.21 (5)	100761916
NW 200	2-371	8.48 (215)	0.21 (5)	100761920
NW 250	2-378	10.48 (266)	0.21 (5)	100761925
NW 320	2-454	12.48 (317)	0.28 (7)	100761932
NW 400	2-460	15.48 (393)	0.28 (7)	100761940
NW 500	2-468	19.46 (494)	0.28 (7)	100761950
NW 630	2-474	24.94 (634)	0.28 (7)	100761963

- Buna-N
- Standard US O-Ring sizes
- Bakeable to 80°C
- Replaceable seal for centering ring assembly

Clamp, Single Claw

n./(mm)

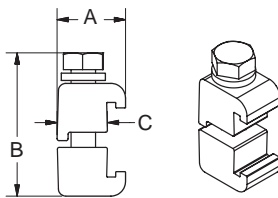


- Aluminum clamp
- Stainless steel bolt
- Stainless steel washer
- To join an MF flange to a tapped bolted flange

Flange Size (ISO)	Bolt Size	A	B	C	Part Number
NW 63	M 8	1.20 (30)	0.39 (10)	0.62 (16)	100761006
NW 80	M 8	1.20 (30)	0.39 (10)	0.62 (16)	100761006
NW 100	M 8	1.20 (30)	0.39 (10)	0.62 (16)	100761006
NW 160	M 10	1.25 (32)	0.39 (10)	0.80 (20)	100761016
NW 200	M 10	1.25 (32)	0.39 (10)	0.80 (20)	100761016
NW 250	M 10	1.25 (32)	0.39 (10)	0.80 (20)	100761016
NW 320	M 12	1.57 (40)	0.72 (18)	1.04 (26)	100761032
NW 400	M 12	1.57 (40)	0.72 (18)	1.04 (26)	100761040
NW 500	M 12	1.57 (40)	0.72 (18)	1.04 (26)	100761040

Clamp, Double Claw

in./(mm)

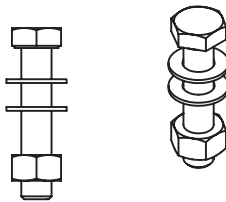


- Aluminum clamp
- Stainless steel bolt
- Stainless steel washer
- To join a pair of MF flange

Flange Size (ISO)	A	B	C	Part Number
NW 63	0.95 (24)	1.98 (50)	0.63 (16)	100761106
NW 80	0.95 (24)	1.98 (50)	0.63 (16)	100761106
NW 100	0.95 (24)	1.98 (50)	0.63 (16)	100761106
NW 160	1.10 (28)	2.05 (52)	0.80 (20)	100761116
NW 200	1.10 (28)	2.05 (52)	0.80 (20)	100761116
NW 250	1.10 (28)	2.05 (52)	0.80 (20)	100761116
NW 320	1.34 (34)	2.56 (65)	1.04 (26)	100761132
NW 400	1.34 (34)	2.56 (65)	1.04 (26)	100761140
NW 500	1.34 (34)	2.56 (65)	1.04 (26)	100761140

Bolt and Nut Set

in./(mm)

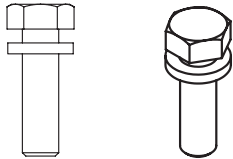


- Stainless steel
- To join two bolted flange
- Nuts and washers included

Flange Size (ISO)	Bolt Size	No. in Set	Pitch (mm)	Part Number
NW 63	M 8 x 40	4	1.25	100761206
NW 80	M 8 x 40	8	1.25	100761208
NW 100	M 8 x 40	8	1.25	100761208
NW 160	M 10 x 50	8	1.50	100761216
NW 200	M 10 x 50	12	1.50	100761220
NW 250	M 10 x 50	12	1.50	100761220
NW 320	M 12 x 60	12	1.75	100761232
NW 400	M 12 x 60	16	1.75	100761240
NW 500	M 12 x 60	16	1.75	100761240
NW 630	M 12 x 65	20	1.75	100761263

Bolt Set

in./(mm)

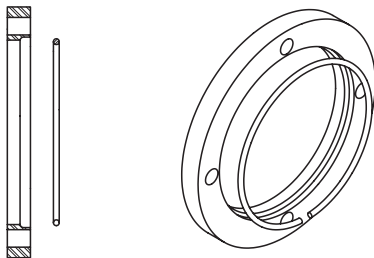


- Stainless steel
- Bolted flang to tapped flang
- Includes washer

Flange Size (ISO)	Bolt Size	No. in Set	Pitch (mm)	Part Number
NW 63	M 8 x 30	4	1.25	100761306
NW 80	M 8 x 30	8	1.25	100761308
NW 100	M 8 x 30	8	1.25	100761308
NW 160	M 10 x 35	8	1.50	100761316
NW 200	M 10 x 35	12	1.50	100761320
NW 250	M 10 x 35	12	1.50	100761320
NW 320	M 12 x 45	12	1.75	100761332
NW 400	M 12 x 45	16	1.75	100761340
NW 500	M 12 x 45	16	1.75	100761340
NW 630	M 12 x 55	20	1.75	100761363

Ring, Rotatable Bolt

in./(mm)

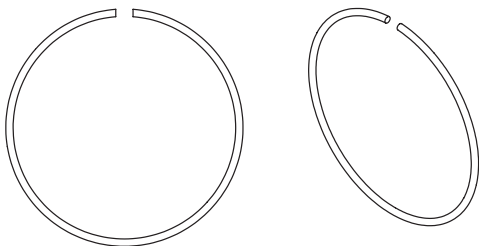


- Aluminum
- Use with MF flang
- Steel retaining ring included
- O.D. and bolt pattern same as bolted flang

Flange Size (ISO)	Part Number
NW 63	100762806
NW 80	100762808
NW 100	100762810
NW 160	100762816
NW 200	100762820
NW 250	100762825
NW 320	100762832
NW 400	100762840
NW 500	100762850

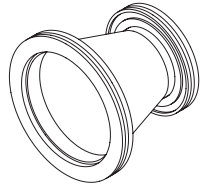
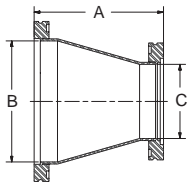
Ring, Retaining

in./(mm)



- Stainless steel
- Retains bolt ring

Flange Size (ISO)	Part Number
NW 63	100762906
NW 80	100762908
NW 100	100762910
NW 160	100762916
NW 200	100762920
NW 250	100762925
NW 320	100762932
NW 400	100762940
NW 500	100762950

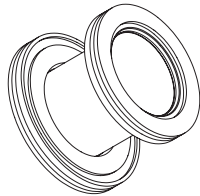
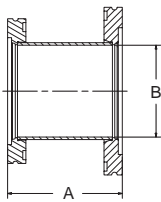


- Stainless steel type 304
- Other combinations available on request
- High conductance adapter

Conic Reducer

in./(mm)

Flange Size (ISO)	A	B	C	Part Number
NW 63 to NW 80	4.14 (105)	2.87 (73)	2.37 (60)	100764906
NW 63 to NW 100	4.14 (105)	3.83 (97)	2.37 (60)	100764917
NW 80 to NW 100	4.14 (105)	3.83 (97)	2.87 (73)	100764908
NW 80 to NW 160	9.52 (242)	5.78 (147)	2.87 (73)	100764927
NW 100 to NW 160	9.52 (242)	5.78 (147)	3.83 (97)	100764910



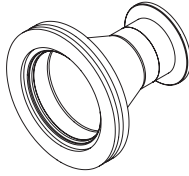
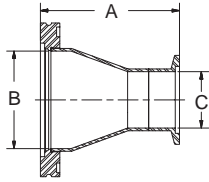
- Stainless steel type 304
- Short overall length

Step Reducer

in./(mm)

Flange Size (ISO)	A	B	Part Number
NW 63 to NW 80	2.95 (75)	2.31 (59)	100762506
NW 63 to NW 100	2.95 (75)	2.31 (59)	100762517
NW 63 to NW 160	2.95 (75)	2.31 (59)	100762527
NW 80 to NW 100	2.95 (75)	2.87 (73)	100762508
NW 100 to NW 160	2.95 (75)	3.87 (98)	100762510

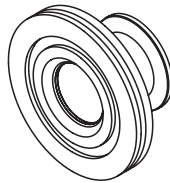
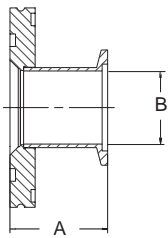
Conic Adapter, ISO-MF Flange to ISO-KF Flange in./(mm)



- Stainless steel type 304
- Special adapters available upon request
- High conductance adapter

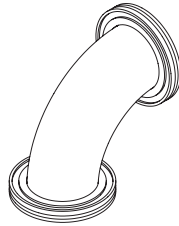
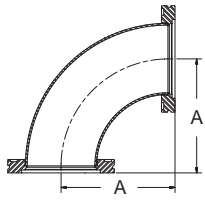
Flange Size (ISO)	A	B	C	Part Number
NW 63 to NW 40	3.39 (86)	2.37 (60)	1.37 (35)	100765006
NW 63 to NW 50	3.39 (86)	2.37 (60)	1.87 (47)	100765017
NW 80 to NW 40	4.64 (118)	2.87 (73)	1.37 (35)	100765016
NW 80 to NW 50	4.64 (118)	2.87 (73)	1.87 (47)	100765008
NW 100 to NW 50	4.64 (118)	3.83 (97)	1.87 (47)	100765018

Step Adapter, ISO-MF Flange to ISO-KF Flange in./(mm)



- Stainless steel type 304
- With O-ring groove
- Special adapters available upon request
- Short overall length

Flange Size (ISO)	A	B	Part Number
NW 63 to NW 40	1.77 (45)	1.37 (35)	100762606
NW 63 to NW 50	1.77 (45)	1.87 (47)	100762617
NW 80 to NW 40	1.77 (45)	1.37 (35)	100762616
NW 80 to NW 50	1.77 (45)	1.87 (47)	100762608
NW 100 to NW 40	1.77 (45)	1.37 (35)	100762620
NW 100 to NW 50	1.77 (45)	1.87 (47)	100762618

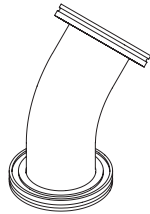
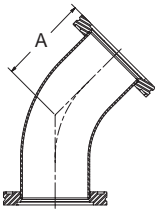


90° Elbow, Smooth Radius

in./(mm)

Flange Size (ISO)	A	Part Number
NW 63	4.00 (102)	100764606
NW 80	4.74 (120)	100764608
NW 100	6.24 (158)	100764610
NW 160	9.24 (235)	100764616

- Stainless steel type 304
- ISO-MF flange , same size both ports

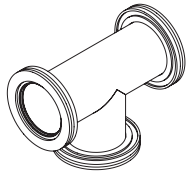
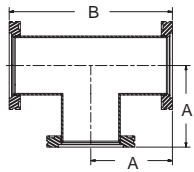


45° Elbow, Smooth Radius

in./(mm)

Flange Size (ISO)	A	Part Number
NW 63	3.25 (83)	100764406
NW 80	3.93 (100)	100764408
NW 100	5.03 (128)	100764410
NW 160	5.49 (139)	100764416

- Stainless steel type 304
- ISO-MF flange , same size both ports

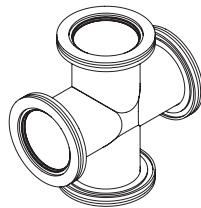
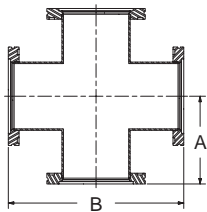


- Stainless steel type 304
- ISO-MF flange , same size all ports
- Standard flang face to centerline dimensions
- Larger sizes available on request

Tee

in./(mm)

Flange Size (ISO)	A	B	Part Number
NW 63	3.46 (88)	6.92 (176)	100761406
NW 80	3.86 (98)	7.72 (196)	100761408
NW 100	4.25 (108)	8.50 (216)	100761410
NW 160	5.43 (138)	10.86 (276)	100761416
NW 200	6.61 (168)	13.22 (336)	100761420
NW 250	8.19 (208)	16.38 (416)	100761425
NW 320	12.60 (320)	25.20 (640)	100761432



- Stainless steel type 304
- ISO-MF flange , same size all ports
- Standard flang face to centerline dimensions
- Larger sizes available on request

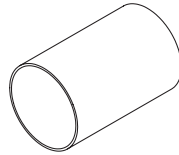
Cross

in./(mm)

Flange Size (ISO)	A	B	Part Number
NW 63	3.46 (88)	6.92 (176)	100761506
NW 80	3.86 (98)	7.72 (196)	100761508
NW 100	4.25 (108)	8.50 (216)	100761510
NW 160	5.43 (138)	10.86 (276)	100761516
NW 200	6.61 (168)	13.22 (336)	100761520
NW 250	8.19 (208)	16.38 (416)	100761525
NW 320	12.60 (320)	25.20 (640)	100761532

Tubing

in./ (mm)

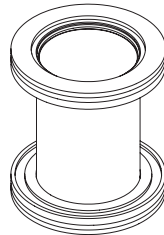
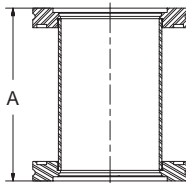


- Stainless steel type 304
- Tube ends deburred, cleaned and capped
- Price per 10 foot length of tube

Flange Size (ISO)	A	B	Part Number
NW 63	2½"	.065"	100764506
NW 80	3"	.065"	100764508
NW 100	4"	.065"	100764510
NW 100	4"	.083"	100764511
NW 160	6"	.083"	100764516
NW 200	8"	.120"	100764520
NW 250	10"	.125"	100764525

Straight Section

in./ (mm)

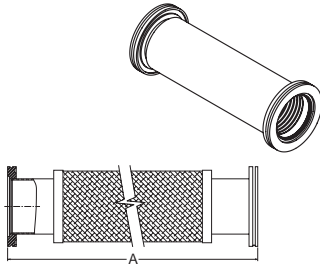


- Stainless steel type 304
- Special lengths to order
- MF type flange

Flange Size (ISO)	A	Part Number
NW 63	6.92 (176)	100761706
NW 63	4.18 (106)	100761707
NW 80	7.72 (196)	100761708
NW 80	4.18 (106)	100761709
NW 100	8.50 (216)	100761710
NW 100	4.18 (106)	100761711
NW 160	10.86 (276)	100761716
NW 160	4.18 (106)	100761717
NW 200	13.22 (336)	100761720
NW 200	4.18 (106)	100761721
NW 250	16.38 (416)	100761725
NW 250	4.18 (106)	100761726

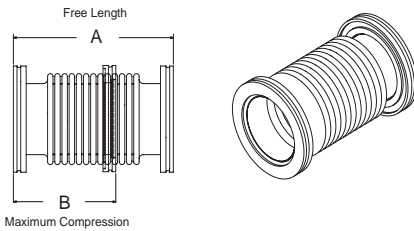
Braided Metal Hose

in./(mm)



- Ideal for rough pumping line
- Stainless steel
- Flexible, yet resistant to contraction

Flange Size (ISO)	A	Static Bend Radius	Part Number
NW 63	10.74 (273)	7.50 (191)	100766006
NW 63	20.74 (527)	7.50 (191)	100766106
NW 63	40.74 (1035)	7.50 (191)	100766206
NW 80	10.74 (273)	8.75 (222)	100766008
NW 80	20.74 (527)	8.75 (222)	100766108
NW 80	40.74 (1035)	8.75 (222)	100766208
NW 100	10.74 (273)	10.00 (254)	100766010
NW 100	20.74 (527)	10.00 (254)	100766110
NW 100	40.74 (1035)	10.00 (254)	100766210



- **CAUTION:**
Flanges must be supported to prevent collapsing when subjected to vacuum
- Stainless steel
- Formed bellows
- Bellows buttwelded
- Thin wall
- Flexible

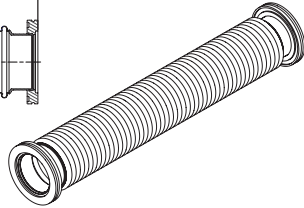
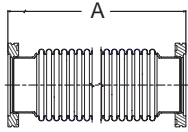
Bellows, Section

in./(mm)

Flange Size (ISO)	A	B	Part Number
NW 63	5.90 (150)	4.50 (115)	100763506G
NW 80	5.90 (150)	4.50 (115)	100763508G
NW 100	5.90 (150)	4.50 (115)	100763510G
NW 160	7.90 (200)	5.70 (145)	100763516G
NW 200	9.80 (250)	6.90 (175)	100763520G
NW 250	11.80 (300)	8.10 (205)	100763525G

Metal Hose, Thick Wall

in./(mm)

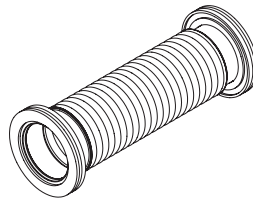
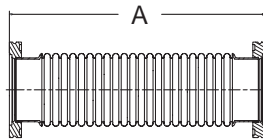


- CAUTION:**
Flanges must be supported to prevent collapsing when subjected to vacuum
- Unsheathed
 - Stainless steel
 - Formed metal
 - Special lengths on request
 - Hose butt welded

Flange Size (ISO)	Static Bend Radius	A	Part Number
NW 63	6½"	19.69 (500)	100763606
NW 63	6½"	39.40 (1000)	100763706
NW 80	7"	19.69 (500)	100763608
NW 80	7"	39.40 (1000)	100763708
NW 100	11"	19.69 (500)	100763610
NW 100	11"	39.40 (1000)	100763710
NW 160	17"	19.69 (500)	100763616
NW 160	17"	39.40 (1000)	100763716
NW 200	18"	19.69 (500)	100763620
NW 200	18"	39.40 (1000)	100763720
NW 250	24"	19.69 (500)	100763625
NW 250	24"	39.40 (1000)	100763725

Metal Hose, Thin Wall

in./(mm)



- **CAUTION:**
Flanges must be supported to prevent collapsing when subjected to vacuum
- Unsheathed
- Stainless steel
- Formed metal
- Flexible
- Hose butt welded

Flange Size (ISO)	A	Part Number
NW 63	9.84 (250)	100763806
NW 63	19.69 (500)	100763906
NW 63	39.40 (1000)	100764006
NW 80	9.84 (250)	100763808
NW 80	19.69 (500)	100763908
NW 80	39.40 (1000)	100764008
NW 100	9.84 (250)	100763810
NW 100	19.69 (500)	100763910

Flange Protector Cap

in./(mm)

- Protects flange faces
- Plastic

Flange Size (ISO)	Part Number
NW 63	100760006
NW 80	100760008
NW 100	100760010
NW 160	100005788



100005788	Flange Protector Cap, NW 160	100760732	Seal, Centering Ring Assy, NW 320, Aluminum/Buna-N
100760006	Flange Protector Cap, NW 63	100760740	Seal, Centering Ring Assy, NW 400, Aluminum/Buna-N
100760008	Flange Protector Cap, NW 80	100760750	Seal, Centering Ring Assy, NW 500, Aluminum/Buna-N
100760010	Flange Protector Cap, NW 100	100760763	Seal, Centering Ring Assy, NW 630, Aluminum/Buna-N
100760106	Flange, Blank-Off, NW 63	100761006	Single Claw Clamp, NW 63, Aluminum
100760108	Flange, Blank-Off, NW 80	100761006	Single Claw Clamp, NW 80, Aluminum
100760110	Flange, Blank-Off, NW 100	100761006	Single Claw Clamp, NW 100, Aluminum
100760116	Flange, Blank-Off, NW 160	100761016	Single Claw Clamp, NW 160, Aluminum
100760120	Flange, Blank-Off, NW 200	100761016	Single Claw Clamp, NW 200, Aluminum
100760125	Flange, Blank-Off, NW 250	100761016	Single Claw Clamp, NW 250, Aluminum
100760132	Flange, Blank-Off, NW 320	100761032	Single Claw Clamp, NW 320, Aluminum
100760140	Flange, Blank-Off, NW 400	100761040	Single Claw Clamp, NW 400, Aluminum
100760150	Flange, Blank-Off, NW 500	100761040	Single Claw Clamp, NW 500, Aluminum
100760206	Flange, Bored, NW 63	100761106	Double Claw Clamp, NW 63, Aluminum
100760208	Flange, Bored, NW 80	100761106	Double Claw Clamp, NW 80, Aluminum
100760210	Flange, Bored, NW 100	100761106	Double Claw Clamp, NW 100, Aluminum
100760216	Flange, Bored, NW 160	100761116	Double Claw Clamp, NW 160, Aluminum
100760220	Flange, Bored, NW 200	100761116	Double Claw Clamp, NW 200, Aluminum
100760225	Flange, Bored, NW 250	100761116	Double Claw Clamp, NW 250, Aluminum
100760232	Flange, Bored, NW 320	100761132	Double Claw Clamp, NW 320, Aluminum
100760240	Flange, Bored, NW 400	100761140	Double Claw Clamp, NW 400, Aluminum
100760250	Flange, Bored, NW 500	100761140	Double Claw Clamp, NW 500, Aluminum
100760306	Flange, Bolted, Blank, NW 63	100761206	Bolt and Nut Set, NW 63, Stainless Steel
100760308	Flange, Bolted, Blank, NW 80	100761208	Bolt and Nut Set, NW 80, Stainless Steel
100760310	Flange, Bolted, Blank, NW 100	100761208	Bolt and Nut Set, NW 100, Stainless Steel
100760316	Flange, Bolted, Blank, NW 160	100761216	Bolt and Nut Set, NW 160, Stainless Steel
100760320	Flange, Bolted, Blank, NW 200	100761220	Bolt and Nut Set, NW 200, Stainless Steel
100760325	Flange, Bolted, Blank, NW 250	100761220	Bolt and Nut Set, NW 250, Stainless Steel
100760332	Flange, Bolted, Blank, NW 320	100761232	Bolt and Nut Set, NW 320, Stainless Steel
100760340	Flange, Bolted, Blank, NW 400	100761240	Bolt and Nut Set, NW 400, Stainless Steel
100760350	Flange, Bolted, Blank, NW 500	100761240	Bolt and Nut Set, NW 500, Stainless Steel
100760363	Flange, Bolted, Blank, NW 630	100761263	Bolt and Nut Set, NW 630, Stainless Steel
100760406	Flange, Long Weld Stub, NW 63	100761306	Bolt Set, for tapped bolted flanges, NW 63
100760408	Flange, Long Weld Stub, NW 80	100761308	Bolt Set, for tapped bolted flanges, NW 80
100760410	Flange, Long Weld Stub, NW 100, .065" wall	100761308	Bolt Set, for tapped bolted flanges, NW 100
100760411	Flange, Long Weld Stub, NW 100, .083" wall	100761316	Bolt Set, for tapped bolted flanges, NW 160
100760416	Flange, Long Weld Stub, NW 160	100761320	Bolt Set, for tapped bolted flanges, NW 200
100760420	Flange, Long Weld Stub, NW 200	100761320	Bolt Set, for tapped bolted flanges, NW 250
100760425	Flange, Long Weld Stub, NW 250	100761332	Bolt Set, for tapped bolted flanges, NW 320
100760432	Flange, Long Weld Stub, NW 320	100761340	Bolt Set, for tapped bolted flanges, NW 400
100760440	Flange, Long Weld Stub, NW 400	100761340	Bolt Set, for tapped bolted flanges, NW 500
100760450	Flange, Long Weld Stub, NW 500	100761363	Bolt Set, for tapped bolted flanges, NW 630
100760506	Seal, Centering Ring Assy, NW 63, SS/Viton	100761406	Tee, NW 63, Stainless Steel
100760508	Seal, Centering Ring Assy, NW 80, SS/Viton	100761408	Tee, NW 80, Stainless Steel
100760510	Seal, Centering Ring Assy, NW 100, SS/Viton	100761410	Tee, NW 100, Stainless Steel
100760516	Seal, Centering Ring Assy, NW 160, SS/Viton	100761416	Tee, NW 160, Stainless Steel
100760520	Seal, Centering Ring Assy, NW 200, SS/Viton	100761420	Tee, NW 200, Stainless Steel
100760525	Seal, Centering Ring Assy, NW 250, SS/Viton	100761425	Tee, NW 250, Stainless Steel
100760532	Seal, Centering Ring Assy, NW 320, SS/Viton	100761432	Tee, NW 320, Stainless Steel
100760540	Seal, Centering Ring Assy, NW 400, SS/Viton		
100760550	Seal, Centering Ring Assy, NW 500, SS/Viton	100761506	Cross, NW 63, Stainless Steel
100760563	Seal, Centering Ring Assy, NW 630, SS/Viton	100761508	Cross, NW 80, Stainless Steel
100760606	Seal, Centering Ring Assy, NW 63, Aluminum/Viton	100761510	Cross, NW 100, Stainless Steel
100760608	Seal, Centering Ring Assy, NW 80, Aluminum/Viton	100761516	Cross, NW 160, Stainless Steel
100760610	Seal, Centering Ring Assy, NW 100, Aluminum/Viton	100761520	Cross, NW 200, Stainless Steel
100760616	Seal, Centering Ring Assy, NW 160, Aluminum/Viton	100761525	Cross, NW 250, Stainless Steel
100760620	Seal, Centering Ring Assy, NW 200, Aluminum/Viton	100761532	Cross, NW 320, Stainless Steel
100760625	Seal, Centering Ring Assy, NW 250, Aluminum/Viton	100761706	Straight Section, NW 63, 6.92" length
100760632	Seal, Centering Ring Assy, NW 320, Aluminum/Viton	100761707	Straight Section, NW 63, 4.18" length
100760640	Seal, Centering Ring Assy, NW 400, Aluminum/Viton	100761708	Straight Section, NW 80, 7.72" length
100760650	Seal, Centering Ring Assy, NW 500, Aluminum/Viton	100761709	Straight Section, NW 80, 4.18" length
100760663	Seal, Centering Ring Assy, NW 630, Aluminum/Viton	100761710	Straight Section, NW 100, 8.5" length
		100761711	Straight Section, NW 100, 4.18" length
100760706	Seal, Centering Ring Assy, NW 63, Aluminum/Buna-N	100761716	Straight Section, NW 160, 10.86" length
100760708	Seal, Centering Ring Assy, NW 80, Aluminum/Buna-N	100761717	Straight Section, NW 160, 4.18" length
100760710	Seal, Centering Ring Assy, NW 100, Aluminum/Buna-N	100761720	Straight Section, NW 200, 13.22" length
100760716	Seal, Centering Ring Assy, NW 160, Aluminum/Buna-N	100761721	Straight Section, NW 200, 4.18" length
100760720	Seal, Centering Ring Assy, NW 200, Aluminum/Buna-N	100761725	Straight Section, NW 250, 16.38" length
100760725	Seal, Centering Ring Assy, NW 250, Aluminum/Buna-N	100761726	Straight Section, NW 250, 4.18" length



100761906	Seal, Replacement O-Ring, NW 63, Buna-N	100762940	Retaining Ring, NW 400
100761908	Seal, Replacement O-Ring, NW 80, Buna-N	100762950	Retaining Ring, NW 500
100761910	Seal, Replacement O-Ring, NW 100, Buna-N		
100761916	Seal, Replacement O-Ring, NW 160, Buna-N	100763506G	Bellows, NW 63, 5.9" length
100761920	Seal, Replacement O-Ring, NW 200, Buna-N	100763508G	Bellows, NW 80, 5.9" length
100761925	Seal, Replacement O-Ring, NW 250, Buna-N	100763510G	Bellows, NW 100, 5.9" length
100761932	Seal, Replacement O-Ring, NW 320, Buna-N	100763516G	Bellows, NW 160, 7.9" length
100761940	Seal, Replacement O-Ring, NW 400, Buna-N	100763520G	Bellows, NW 200, 9.8" length
100761950	Seal, Replacement O-Ring, NW 500, Buna-N	100763525G	Bellows, NW 250, 11.8" length
100761963	Seal, Replacement O-Ring, NW 630, Buna-N		
100762006	Seal, Replacement O-Ring, NW 63, Viton	100763606	Thick Wall Metal Hose, NW 63, 19.69" length
100762008	Seal, Replacement O-Ring, NW 80, Viton	100763608	Thick Wall Metal Hose, NW 80, 19.69" length
100762010	Seal, Replacement O-Ring, NW 100, Viton	100763610	Thick Wall Metal Hose, NW 100, 19.69" length
100762016	Seal, Replacement O-Ring, NW 160, Viton	100763616	Thick Wall Metal Hose, NW 160, 19.69" length
100762020	Seal, Replacement O-Ring, NW 200, Viton	100763620	Thick Wall Metal Hose, NW 200, 19.69" length
100762025	Seal, Replacement O-Ring, NW 250, Viton	100763625	Thick Wall Metal Hose, NW 250, 19.69" length
100762032	Seal, Replacement O-Ring, NW 320, Viton	100763706	Thick Wall Metal Hose, NW 63, 39.40" length
100762040	Seal, Replacement O-Ring, NW 400, Viton	100763708	Thick Wall Metal Hose, NW 80, 39.40" length
100762050	Seal, Replacement O-Ring, NW 500, Viton	100763710	Thick Wall Metal Hose, NW 100, 39.40" length
100762063	Seal, Replacement O-Ring, NW 630, Viton	100763716	Thick Wall Metal Hose, NW 160, 39.40" length
		100763720	Thick Wall Metal Hose, NW 200, 39.40" length
		100763725	Thick Wall Metal Hose, NW 250, 39.40" length
100762406	Flange, Bolted, Bored, NW 63	100763806	Thin Wall Metal Hose, NW 63, 9.84" length
100762408	Flange, Bolted, Bored, NW 80	100763808	Thin Wall Metal Hose, NW 80, 9.84" length
100762410	Flange, Bolted, Bored, NW 100	100763810	Thin Wall Metal Hose, NW 100, 9.84" length
100762416	Flange, Bolted, Bored, NW 160	100763906	Thin Wall Metal Hose, NW 63, 19.69" length
100762420	Flange, Bolted, Bored, NW 200	100763908	Thin Wall Metal Hose, NW 80, 19.69" length
100762425	Flange, Bolted, Bored, NW 250	100763910	Thin Wall Metal Hose, NW 100, 19.69" length
100762432	Flange, Bolted, Bored, NW 320	100764006	Thin Wall Metal Hose, NW 63, 39.40" length
100762440	Flange, Bolted, Bored, NW 400	100764008	Thin Wall Metal Hose, NW 80, 39.40" length
100762450	Flange, Bolted, Bored, NW 500		
100762463	Flange, Bolted, Bored, NW 630		
100762506	Step Reducer, NW 63 to NW 80	100764406	45° Elbow, Smooth Radius, NW 63
100762508	Step Reducer, NW 80 to NW 100	100764408	45° Elbow, Smooth Radius, NW 80
100762510	Step Reducer, NW 100 to NW 160	100764410	45° Elbow, Smooth Radius, NW 100
100762517	Step Reducer, NW 63 to NW 100	100764416	45° Elbow, Smooth Radius, NW 160
100762527	Step Reducer, NW 63 to NW 160		
100762606	Step Adapter, NW 63 to NW 40, w/Groove	100764506	Tubing (price per 10 foot), NW 63, 0.065 wall, Stainless Steel
100762608	Step Adapter, NW 80 to NW 50, w/Groove	100764508	Tubing (price per 10 foot) NW 80, 0.065 wall, Stainless Steel
100762616	Step Adapter, NW 80 to NW 40, w/Groove	100764510	Tubing (price per 10 foot) NW 100, 0.065 wall, Stainless Steel
100762617	Step Adapter, NW 63 to NW 50, w/Groove	100764511	Tubing (price per 10 foot) NW 100, 0.083 wall, Stainless Steel
100762618	Step Adapter, NW 100 to NW 50, w/Groove	100764516	Tubing (price per 10 foot) NW 160, 0.083 wall, Stainless Steel
100762620	Step Adapter, NW 100 to NW 40, w/Groove	100764520	Tubing (price per 10 foot) NW 200, 0.120 wall, Stainless Steel
		100764525	Tubing (price per 10 foot) NW 250, 0.125 wall, Stainless Steel
100762706	Flange, Bolted, Weld Stub, NW 63	100764606	90° Elbow, Smooth Radius, NW 63
100762708	Flange, Bolted, Weld Stub, NW 80	100764608	90° Elbow, Smooth Radius, NW 80
100762710	Flange, Bolted, Weld Stub, NW 100	100764610	90° Elbow, Smooth Radius, NW 100
100762716	Flange, Bolted, Weld Stub, NW 160	100764616	90° Elbow, Smooth Radius, NW 160
100762720	Flange, Bolted, Weld Stub, NW 200		
100762725	Flange, Bolted, Weld Stub, NW 250	100764906	Conic Reducer, NW 63 to NW 80
100762732	Flange, Bolted, Weld Stub, NW 320	100764908	Conic Reducer, NW 80 to NW 100
100762740	Flange, Bolted, Weld Stub, NW 400	100764910	Conic Reducer, NW 100 to NW 160
100762750	Flange, Bolted, Weld Stub, NW 500	100764917	Conic Reducer, NW 63 to NW 100
100762763	Flange, Bolted, Weld Stub, NW 630	100764927	Conic Reducer, NW 80 to NW 160
100762806	Rotatable, Bolted Ring Assy, NW 63	100765006	Conic Adapter, NW 63 to NW 40
100762808	Rotatable, Bolted Ring Assy, NW 80	100765008	Conic Adapter, NW 80 to NW 50
100762810	Rotatable, Bolted Ring Assy, NW 100	100765016	Conic Adapter, NW 80 to NW 40
100762816	Rotatable, Bolted Ring Assy, NW 160	100765017	Conic Adapter, NW 63 to NW 50
100762820	Rotatable, Bolted Ring Assy, NW 200	100765018	Conic Adapter, NW 100 to NW 50
100762825	Rotatable, Bolted Ring Assy, NW 250		
100762832	Rotatable, Bolted Ring Assy, NW 320	100766006	Braided Metal Hose, NW 63, 10.74" length
100762840	Rotatable, Bolted Ring Assy, NW 400	100766008	Braided Metal Hose, NW 80, 10.74" length
100762850	Rotatable, Bolted Ring Assy, NW 500	100766010	Braided Metal Hose, NW 100, 10.74" length
		100766106	Braided Metal Hose, NW 63, 20.74" length
		100766108	Braided Metal Hose, NW 80, 20.74" length
100762906	Retaining Ring, NW 63	100766110	Braided Metal Hose, NW 100, 20.74" length
100762908	Retaining Ring, NW 80	100766206	Braided Metal Hose, NW 63, 40.74" length
100762910	Retaining Ring, NW 100	100766208	Braided Metal Hose, NW 80, 40.74" length
100762916	Retaining Ring, NW 160	100766210	Braided Metal Hose, NW 100, 40.74" length
100762920	Retaining Ring, NW 200		
100762925	Retaining Ring, NW 250	100937685	Seal, Overpressure Assembly, NW 160
100762932	Retaining Ring, NW 320	100938657	Seal, Overpressure Assembly, NW 80
		100938658	Seal, Overpressure Assembly, NW 100