



P&E TECHNOLOGY



Stainless Steel Sanitary Tubing,
Fittings, Valves, Sight glass,
Spray balls and Filters





P&E TECHNOLOGY

Provide our customers with the best solution accurately and efficiently.

ISSUE DATE: August 03, 2015

CERTIFICATE AUTHORIZATION NUMBER: 1823



THIS IS TO CERTIFY THAT

P&E Flow Technology Co., Ltd.

Shacheng Industry Park, Longwan, 325000, Wenzhou, China

is hereby authorized to continue to apply the 3-A Symbol to the models of equipment, conforming to 3-A Sanitary Standards for:

Number 78-03

78-03 (Spray Cleaning) Devices Intended to Remain in Place

set forth below

Clean-in-Place Model Number: Spray Ball 7002 in 304, 304L, 316, 316L

VALID THROUGH: December 31, 2023

Timothy R. Rugh
Executive Director
3-A Sanitary Standards, Inc.

The issuance of this authorization for the use of the 3-A Symbol is based upon the voluntary certification, by the applicant for it, that the equipment listed above complies fully with the 3-A Sanitary Standard(s) designated. Legal responsibility for compliance is solely that of the holder of this Certificate of Authorization, and 3-A Sanitary Standards, Inc. does not warrant that the holder of an authorization at all times complies with the provisions of the said 3-A Sanitary Standards. This in no way affects the responsibility of 3-A Sanitary Standards, Inc. to take appropriate action in such cases in which evidence of nonconformance has been established.

NEXT TPV INSPECTION/REPORT DUE: September 2026

ISSUE DATE: November 04, 2014

CERTIFICATE AUTHORIZATION NUMBER: 1773



THIS IS TO CERTIFY THAT

P&E Flow Technology Co., Ltd.

Shacheng Industry Park, Longwan, 325000, Wenzhou, China

is hereby authorized to continue to apply the 3-A Symbol to the models of equipment, conforming to 3-A Sanitary Standards for:

Number 33-03

33-03 (Metal Tubing)

set forth below

CIP Models: 3A-TUBE-XX, where XX is sizes from 1/4" to 28, in 304, 304L and 316L

VALID THROUGH: December 31, 2023

Timothy R. Rugh
Executive Director
3-A Sanitary Standards, Inc.

The issuance of this authorization for the use of the 3-A Symbol is based upon the voluntary certification, by the applicant for it, that the equipment listed above complies fully with the 3-A Sanitary Standard(s) designated. Legal responsibility for compliance is solely that of the holder of this Certificate of Authorization, and 3-A Sanitary Standards, Inc. does not warrant that the holder of an authorization at all times complies with the provisions of the said 3-A Sanitary Standards. This in no way affects the responsibility of 3-A Sanitary Standards, Inc. to take appropriate action in such cases in which evidence of nonconformance has been established.

NEXT TPV INSPECTION/REPORT DUE: September 2024

ISSUE DATE: November 04, 2014

CERTIFICATE AUTHORIZATION NUMBER: 1774



THIS IS TO CERTIFY THAT

P&E Flow Technology Co., Ltd.

Shacheng Industry Park, Longwan, 325000, Wenzhou, China

is hereby authorized to continue to apply the 3-A Symbol to the models of equipment, conforming to 3-A Sanitary Standards for:

Number 63-04

63-04 (Sanitary Fittings)

set forth below

CIP Model Number(s): Fittings in 304 and 316 stainless steel, including the following types: Weld Types: 90-degree Short Elbows (0.5" x 0.5"), 2WCL, 90-degree Long Elbows (0.5" x 4"), L267, 45-degree Short Elbows (0.75" x 0.75"), 2WU7, 45-degree Long Elbows (1" x 4"), L267, 180-degree Elbows (1" x 4") 2WU7, Concentric Short Tee (0.5" x 4"), L288-7, Concentric Long Tee (0.5" x 4") L7W7, Reducing Short Tee (0.75" x 0.5" - 4" x 3") L7RW7, Instrument Short Tee (1" x 4") L7WW7, Cross (1" x 4") L9WWW7, Concentric Reducer (1" x 0.5" - 4" x 3") L317, Eccentric Reducer (1" x 0.5" - 4" x 3") L327, 1" x 45 (0.5" x 4") L8A-7, Ferrules: Stand and 14WMP (0.5" x 4"), Short 14MPW (1" x 4"), Long WLMP (1" x 4"), L14AM (0.5" x 4"), Line 15W114W/15WL114W/L1 (1" x 4"), Clamp: Concentric Reducer (1.5" x 1" - 4" x 3") 31-14MP, Eccentric Reducer (1.5" x 1" - 4" x 3") 32-14MP, Concentric Short Tee (0.5" x 4") 7MP, Reducing Short Tee (0.75" x 0.5" - 4" x 3") 7RMP, Cross (1" x 4") 9MP, 90-degree Elbow (0.5" x 4") 2CMP, 45-degree Short Elbow (1" x 4") 2KMP, End Cap (0.5" x 1.2") 16AMP, End Cap (1" x 4") 16A, Line End Caps (1" x 8") 16AI-15I & 16AI-16, Hose Adapter (0.5" x 4") 14MP-HR, Hose Expansion Fitting (1" x 4") 14RMP, 1" x 45 (0.5" x 8") 28AMP, Clamp Weld, 90-degree Long Elbows (0.5" x 4") L2CMP, 45-degree Short Elbows (1" x 4") L2KMP, Concentric Reducer (1.5" x 1" - 4" x 3") L31M7, Eccentric Reducer (1.5" x 1" - 4" x 3") L32M7, Concentric Short Tee (0.5" x 4") L7WWW.

VALID THROUGH: December 31, 2022

Timothy R. Rugh
Executive Director
3-A Sanitary Standards, Inc.

The issuance of this authorization for the use of the 3-A Symbol is based upon the voluntary certification, by the applicant for it, that the equipment listed above complies fully with the 3-A Sanitary Standard(s) designated. Legal responsibility for compliance is solely that of the holder of this Certificate of Authorization, and 3-A Sanitary Standards, Inc. does not warrant that the holder of an authorization at all times complies with the provisions of the said 3-A Sanitary Standards. This in no way affects the responsibility of 3-A Sanitary Standards, Inc. to take appropriate action in such cases in which evidence of nonconformance has been established.

NEXT TPV INSPECTION/REPORT DUE: August 2026

ISSUE DATE: August 03, 2015

CERTIFICATE AUTHORIZATION NUMBER: 1824



THIS IS TO CERTIFY THAT

P&E Flow Technology Co., Ltd.

Shacheng Industry Park, Longwan, 325000, Wenzhou, China

is hereby authorized to continue to apply the 3-A Symbol to the models of equipment, conforming to 3-A Sanitary Standards for:

Number 84-02

84-02 (Personnel Access Ports for Wet Applications)

set forth below

Clean-in-Place Model Numbers: 7011 NPDC (sizes 500 and 600), 7021 LWEE (sizes 500 and 600), 7022 LP6D (sizes 500 and 600), 7051 ZSD (sizes 500) in 304, 304L, 316 and 316L stainless steel, with silicone seals

VALID THROUGH: December 31, 2023

Timothy R. Rugh
Executive Director
3-A Sanitary Standards, Inc.

The issuance of this authorization for the use of the 3-A Symbol is based upon the voluntary certification, by the applicant for it, that the equipment listed above complies fully with the 3-A Sanitary Standard(s) designated. Legal responsibility for compliance is solely that of the holder of this Certificate of Authorization, and 3-A Sanitary Standards, Inc. does not warrant that the holder of an authorization at all times complies with the provisions of the said 3-A Sanitary Standards. This in no way affects the responsibility of 3-A Sanitary Standards, Inc. to take appropriate action in such cases in which evidence of nonconformance has been established.

NEXT TPV INSPECTION/REPORT DUE: August 2026

TABLE OF CONTENTS

TUBING & HANGERS

1.1 ASTM A270 Stainless Steel Sanitary Tubing	06
1.2 HANGERS	08

SANITARY FITTINGS

2.1 Sanitary Clamp Fittings	10
2.2 Sanitary Welded Fittings	25

SANITARY VALVES

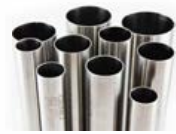
3.1 Sanitary Butterfly Valves	41
3.2 Sanitary Check Valves	47
3.3 Sanitary Ball Valves	50
3.4 Sanitary Diaphragm Valves	54
3.5 Sanitary Tank Bottom Valves	58
3.6 Sanitary Sampling Valves	60
3.7 Sanitary Angle Seat Valves	63
3.8 Pressure / Vacuum Relief Valves	66

SIGHT GLASSES & SPRAY BALLS

4.1 Sanitary Sight Glass	68
4.2 Sanitary Spray Balls	69

SANITARY FILTERS

5.1 Sanitary Filter	72
---------------------	----



TUBING & HANGERS

TUBING & HANGERS

ASTM A270 Stainless Steel Sanitary Tubing

Dimensional Tolerances

Size OD	Tolerances, OD	Wall thickness	Tolerances on wall thickness ^{a)}	Tolerances on Length	Weight Kg/M
1/2" (12.7)	+/-0.005" (0.13)	0.065" (1.65)	+/-10.0%	+1/8" (3.18)	0.4571
3/4" (19.1)	+/-0.005" (0.13)	0.065" (1.65)	+/-10.0%	+1/8" (3.18)	0.7218
1" (25.4)	+/-0.005" (0.13)	0.065" (1.65)	+/-10.0%	+1/8" (3.18)	0.9824
1-1/4" (31.8)	+/-0.008" (0.20)	0.065" (1.65)	+/-10.0%	+1/8" (3.18)	1.2412
1-1/2" (38.1)	+/-0.008" (0.20)	0.065" (1.65)	+/-10.0%	+1/8" (3.18)	1.5078
2" (50.8)	+/-0.008" (0.20)	0.065" (1.65)	+/-10.0%	+1/8" (3.18)	2.0331
2-1/2" (63.5)	+/-0.010" (0.25)	0.065" (1.65)	+/-10.0%	+1/8" (3.18)	2.5585
3" (76.2)	+/-0.010" (0.25)	0.065" (1.65)	+/-10.0%	+1/8" (3.18)	3.0797
4" (101.6)	+/-0.015" (0.38)	0.065" (1.65)	+/-10.0%	+1/8" (3.18)	5.2628
6" (152.4)	+/-0.030" (0.76)	0.083" (2.11)	+/-10.0%	+3/16" (4.8)	7.9116
6" (152.4)	+/-0.030" (0.76)	0.109" (2.77)	+/-10.0%	+3/16" (4.8)	10.3909
8" (203.2)	+0.061" (1.55) - 0.031" (0.79)	0.109" (2.77)	+/-10.0%	+3/16" (4.8)	13.9166

***Uniform wall thickness for 1/2" through 3" size measure.065(16ga).In 4"Size, wall thickness measures .083(14ga),6" and 8" .109(12ga).

Chemical Composition

Elements		304 (wt%)	304L (wt%)	316L (wt%)
(C)	Carbon, Max.	0.080	0.035	0.035
(Mn)	Manganese, Max.	2.00	2.00	2.00
(P)	Phosphorus, Max.	0.040	0.040	0.040
(S)	Sulfur, Max.	0.030	0.030	0.030**
(Si)	Silicon, Max.	0.75	0.75	0.75
(Ni)	Nickel	8.0-11.0	8.0-13.0	10.0-15.0
(Cr)	Chromium	18.0-20.0	18.0-20.0	16.0-18.0
(Mo)	Molybdenum	N/A	N/A	2.0-3.0
(Fe)	Iron	Bal.	Bal.	Bal.
(Cu)	Copper	N/A	N/A	N/A
(N)	Nitrogen	N/A	N/A	N/A

Product Marking

In addition to the marking prescribed in Specification A 1016/A 1016M and specified in the order, the marking shall include whether the tubing is seamless (SML), welded (WLD), or heavily cold worked (HCW), and the surface finish.



ASTM A270 Inch Stainless Steel Sanitary Tubing

Dimensional Tolerances

all dimensions in inches (mm)

Size OD	Tolerances, OD	Wall thickness	Tolerances on wall thickness ^{a)}	Tolerances on Length	Weight Kg/M
1/2" (12.7)	+/-0.005 (0.13)	0.059"(1.50)	+/-10.0%	+1/8" (3.18)	0.4185
3/4" (19.1)	+/-0.005 (0.13)	0.059"(1.50)	+/-10.0%	+1/8" (3.18)	0.6576
1" (25.4)	+/-0.005 (0.13)	0.059"(1.50)	+/-10.0%	+1/8" (3.18)	0.8930
1-1/4" (31.8)	+/-0.008 (0.20)	0.059"(1.50)	+/-10.0%	+1/8" (3.18)	1.1322
1-1/2" (38.1)	+/-0.008 (0.20)	0.059"(1.50)	+/-10.0%	+1/8" (3.18)	1.3676
2" (50.8)	+/-0.008 (0.20)	0.059"(1.50)	+/-10.0%	+1/8" (3.18)	1.8421
2-1/2" (63.5)	+/-0.010 (0.25)	0.059"(1.50)	+/-10.0%	+1/8" (3.18)	2.3166
3" (76.2)	+/-0.010 (0.25)	0.059"(1.50)	+/-10.0%	+1/8" (3.18)	2.7912
4" (101.6)	+/-0.015 (0.38)	0.079"(2.00)	+/-10.0%	+1/8" (3.18)	4.9621
6" (152.4)	+/-0.030 (0.76)	0.079"(2.00)	+/-10.0%	+3/16" (4.8)	7.4929
6" (152.4)	+/-0.030 (0.76)	0.12"(3.05)	+/-10.0%	+3/16" (4.8)	11.3469
8"(203.2)	+/-0.040(1.016)	0.12"(3.05)	+/-10.0%	+3/16" (4.8)	15.2065
10"(254)	+/-0.040(1.016)	0.12"(3.05)	+/-10.0%	+3/16" (4.8)	19.0661
10"(254)	+/-0.040(1.016)	0.134"(3.4)	+/-10.0%	+3/16" (4.8)	21.2243
12"(304.8)	+/-0.040(1.016)	0.12"(3.05)	+/-10.0%	+3/16" (4.8)	22.9256
12"(304.8)	+/-0.040(1.016)	0,134"(3.4)	+/-10.0%	+3/16" (4.8)	25.5268

Ordering Information

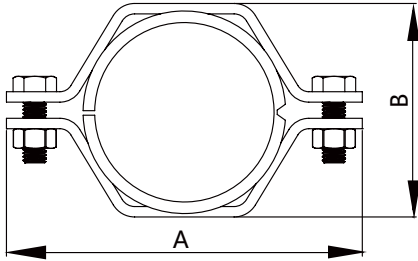
It is the responsibility of the purchaser to specify all requirements that are necessary for material ordered under this specification. Such requirements may be included, but are not limited to, the following:

- Quantity (feet, meters, or number of lengths).
- Name of material (austenitic steel tube).
- Process seamless (SML), welded (WLD), or heavily cold worked (HCW).
- Size (outside diameter and average wall thickness).
- Length (specific or random).
- Surface finish .
- Optional requirements (product analysis, hydrostatic or nondestructive electric test.
- Test report required (Certification Section of Specification A 1016/A 1016M).
- Specification designation.
- Special requirements, and any supplementary requirements.



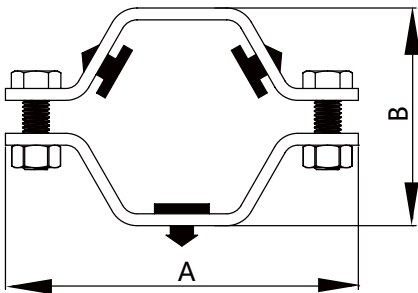
HANGERS

24PV PIPE Hex Hanger with PVC



Size	A		B	
	inch	mm	inch	mm
1"	3.625	92.1	2.125	54.0
1.5"	4.312	109.5	2.625	66.7
2"	4.875	123.8	3.125	79.4
2.5"	4.812	122.2	3.125	79.4
3"	6	152.4	4.25	108.0
4"	7.5	190.5	5.625	142.9
6"	9.75	247.7	7.375	187.3

24RV Hex Hanger with Rubber Grommets



Size	A		B	
	inch	mm	inch	mm
1"	3.625	92.1	2.125	54.0
1.5"	3.625	92.1	2.125	54.0
2"	4.312	109.5	2.625	66.7
2.5"	4.875	123.8	3.125	79.4
3"	5.375	136.5	3.625	92.1
4"	6.562	166.7	4.75	120.7
6"	9	228.6	6.625	168.3



CLAMP FITTINGS

CLAMP FITTINGS

The convenience of clamp fittings in the assembly and disassembly of production lines and equipments is incomparable.

Gaskets for Clamp Fittings are available in several different materials, including EPDM, silicone, FPM and PTFE.

Clamp Fittings meet



Accessories Specification

Size Range: 1/2"OD through 12"

Materials: T304, T316L

Surface Finish:

Mechanically Polished

Internal 20Ra (0.51µm), External 32Ra (0.8µm)

No. 7 - ID & OD

No. 5 - OD only

No. 3 - ID only

No. 1 - unpolished

Customized - upon request

For Example

Description	Size	Material	Surface	Quantity
2CMP 90°	2"	1.4301	NO.7	500

Notes For Dimension Tables

- All Dimensions are in mm.
- Wall Thickness: Fittings 1.0"-3.0" sizes are manufactured with 16 gauge (0.065") wall thickness. The 4.0" tube size is manufactured with 14 gauge (0.083") wall thickness.

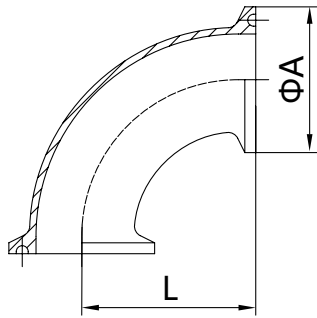
CLAMP FITTINGS

Clamp Type

VN*	ALF* LAVA*	WAUKESH*/SP*	P&E	STEE* & O'BRIE*
EG2C	2CMP	2CMP	2CMP	2CMP
EG2C31CC	2CMP-31MP	2CMP-31MP	2CMP-31MP	2CMP-31MP
EG2FPR	2FMP-14	2FMP-14	2FMP-14	2FMP-14
EG2WU	-	2UMP	2UMP	2UMP
EG2FTR	2FMP-15	2FMP-15	2FMP-15	2FMP-15
EG2K	2KMP	2KMP	2KMP	2KMP
EG7	7MP	7MP	7MP	7MP
EG7R	7RMP	7RMP	7RMP	7RMP
EG9	9MP	9MP	9MP	9MP
EG13	13MHLA	-	-	-
13MHHM	13MHHM	13MHHM	13MHHM	13MHHM
13MHP	13MHP	13MHP	13MHP	13MHP
EG14HT	14MPHT	14MPHT	14MPHT	14MPHT
EG14W	14MPW	14MPW	14MPW	14MPW
EG14WL	14WLMP	14WLMP	14WLMP	14WLMP
EG14AM7	L14AM7	L14AM7	L14AM7	L14AM7
EG2CS	14WMP	14WMP	14WMP	14WMP
EG14RT	14MPHR	14MPHR	14MPHR	14MPHR
EG16A	16AMP	16AMP	16AMP	16AMP
EG17PR	17MP-14	17MP-14	17MP-14	17MP-14
EG17TR	17MP-15	17MP-15	17MP-15	17MP-15
EG21	21MP	21MP	21MP	21MP
EG22	22MP	22MP	22MP	22MP
EG31R	31RMP	31RMP	31RMP	31RMP
EG31CC	31-14MP	31-14MP	31-14MP	31-14MP
EG32CC	32-14MP	32-14MP	32-14MP	32-14MP
EG31PC	31PMP	31PMP	31PMP	31PMP
EG32PC	32PMP	32PMP	32PMP	32PMP
EG31CP	31MPP	31MPP	31MPP	31MPP
EG32CP	32MPP	32MPP	32MPP	32MPP
EG31TC	31TMP	31TMP	31TMP	31TMP
EG32TC	32TMP	32TMP	32TMP	32TMP
EG31CT	31MPT	31MPT	31MPT	31MPT
EG32CT	32MPT	32MPT	32MPT	32MPT
EG40	40MPU	40MPU	40MPU	40MPU
EG40T	40MPG	40MPG	40MPG	40MPG
EG32B	23BMP	23BMP	23BMP	23BMP
EG28A	28AMP	28AMP	28AMP	28AMP
EG28B	28BMP	28BMP	28BMP	28BMP

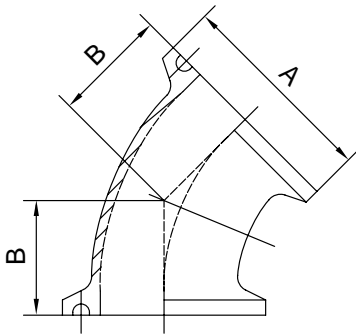
CLAMP FITTINGS

2CMP 90° Clamp Elbow



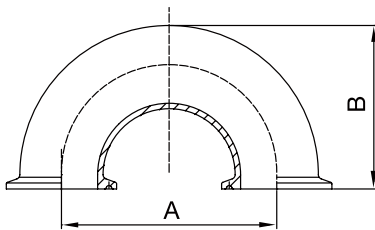
Size	A		L	
	inch	mm	inch	mm
1.0"	1.99	50.5	2.00	50.8
1.5"	1.99	50.5	2.75	69.9
2.0"	2.52	64.0	3.50	88.9
2.5"	3.05	77.5	4.25	107.9
3.0"	3.58	91.0	5.00	127.0
4.0"	4.69	119.0	6.62	168.2

2KMP 45° Clamp Elbow



Size	A		B	
	inch	mm	inch	mm
1.0"	1.99	50.5	1.12	28.5
1.5"	1.99	50.5	1.44	36.5
2.0"	2.52	64.0	1.75	44.45
2.5"	3.05	77.5	2.06	52.3
3.0"	3.58	91.0	2.37	60.3
4.0"	4.69	119.0	3.12	79.4

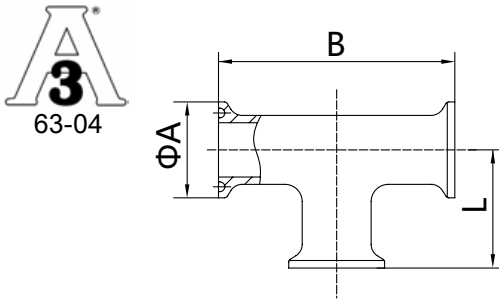
2UMP Clamp 180° Return Bend



Size	A		B	
	inch	mm	inch	mm
1"	3	76.2	2.5	63.5
1.5"	4.5	114.3	3.5	88.9
2"	6	152.4	4.5	114.3
2.5"	7.5	190.5	5.5	139.7
3"	9	228.6	6.5	165.1
4"	12	304.8	8.625	219.1

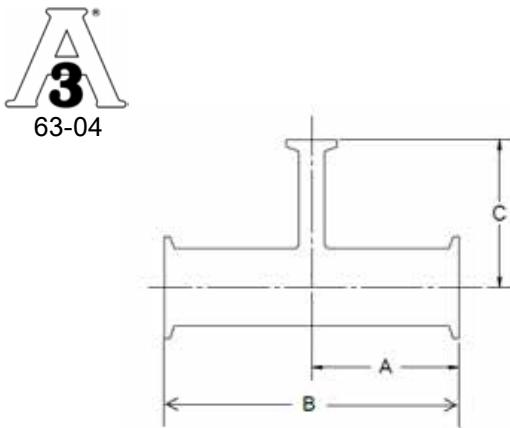
CLAMP FITTINGS

7MP Clamp Equal Tee



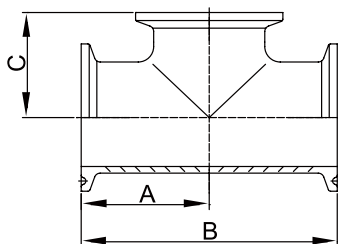
Size	A		B		L	
	inch	mm	inch	mm	inch	mm
1.0"	1.99	50.5	4.75	120.6	2.37	60.3
1.5"	1.99	50.5	5.50	139.8	2.75	69.9
2.0"	2.52	64.0	7.00	177.8	3.50	88.9
2.5"	3.05	77.5	7.00	177.8	3.50	88.9
3.0"	3.58	91.0	7.50	190.6	3.75	95.3
4.0"	4.69	119.0	8.99	228.4	4.50	114.2

7RMP Clamp End Reducing Tee



Size	A		B		C	
	inch	mm	inch	mm	inch	mm
1.5"x1"	2.156	54.8	4.312	109.5	1.875	47.6
2"x1"	2.562	65.1	5.125	130.2	2.125	54.0
2"x1.5"	2.562	65.1	5.125	130.2	2.406	61.1
2.5"x1.5"	2.844	72.2	5.688	144.5	2.656	67.5
2.5"x2"	2.844	72.2	5.688	144.5	2.812	71.4
3"x1.5"	3.093	78.6	6.188	157.2	2.906	73.8
3"x2"	3.093	78.6	6.188	157.2	3.063	77.8
3"x2.5"	3.093	78.6	6.188	157.2	3.093	78.6
4"x1.5"	4.063	103.2	8.125	206.4	3.406	86.5
4"x2"	4.063	103.2	8.125	206.4	3.563	90.5
4"x2.5"	4.063	103.2	8.125	206.4	3.594	91.3
4"x3"	4.063	103.2	8.125	206.4	3.594	91.3

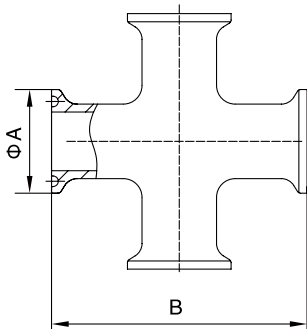
7MPS Clamp End Short Outlet Tee



Size	A		B		C	
	inch	mm	inch	mm	inch	mm
1"	2.375	60.3	4.75	120.6	1.125	28.6
1.5"	2.75	69.8	5.5	139.7	1.375	34.9
2"	3.5	88.9	7	177.8	1.625	41.3
2.5"	3.5	88.9	7	177.8	1.875	47.6
3"	3.75	95.2	7.5	190.5	2.125	54.0
4"	4.5	114.3	9	228.6	2.75	69.9

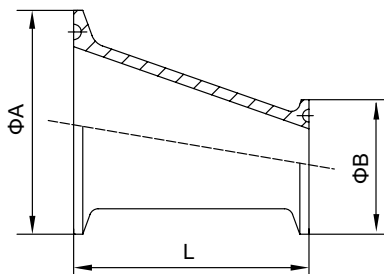
CLAMP FITTINGS

9MP Clamp Equal Cross

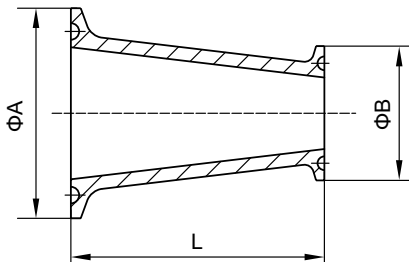


Size	A		B	
	inch	mm	inch	mm
1.0"	1.988	50.5	4.748	120.6
1.5"	1.988	50.5	5.504	139.8
2.0"	2.520	64.0	7.000	177.8
2.5"	3.051	77.5	7.000	177.8
3.0"	3.583	91.0	7.504	190.6
4.0"	4.685	119.0	8.992	228.4

Quick install size head



32-14MP Eccentric Reducer

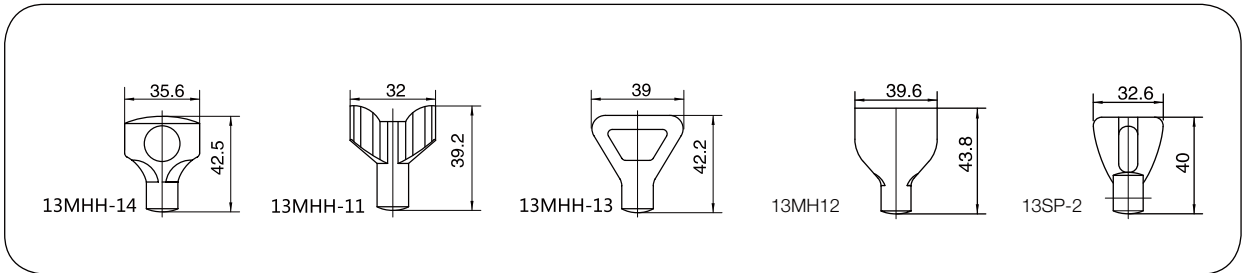


31-14MP Concentric Reducer

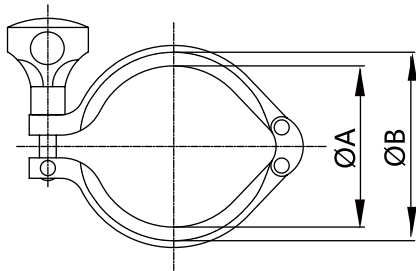
Size	A		B		L	
	inch	mm	inch	mm	inch	mm
1.5"×1.0"	1.988	50.5	1.988	50.5	3.000	76.2
2.0"×1.0"	2.520	64.0	1.988	50.5	5.000	127.0
2.0"×1.5"	2.520	64.0	1.988	50.5	3.000	76.2
2.5"×1.0"	3.051	77.5	1.988	50.5	7.000	177.8
2.5"×1.5"	3.051	77.5	1.988	50.5	5.000	127.0
2.5"×2.0"	3.051	77.5	2.520	64.0	3.000	76.2
3.0"×1.0"	3.583	91.0	1.988	50.5	9.000	228.6
3.0"×1.5"	3.583	91.0	1.988	50.5	7.000	177.8
3.0"×2.0"	3.583	91.0	2.520	64.0	5.000	127.0
3.0"×2.5"	3.583	91.0	3.051	77.5	3.000	76.2
4.0"×1.5"	4.685	119.0	1.988	50.5	11.125	282.5
4.0"×2.0"	4.685	119.0	2.520	64.0	9.125	231.7
4.0"×2.5"	4.685	119.0	3.051	77.5	7.125	180.9
4.0"×3.0"	4.685	119.0	3.583	91.0	5.125	130.1

CLAMP FITTINGS

Nut

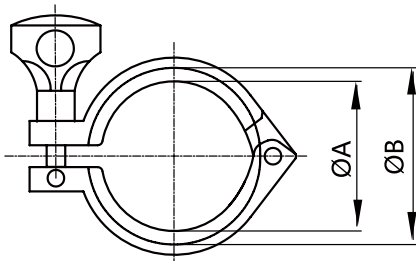


13MHHM Double Hinge Heavy Duty Clamp



Size	A		B	
	inch	mm	inch	mm
1"-1.5"	1.748	44.4	2.122	53.6
2"	2.276	57.8	2.654	67
2.5"	2.881	71.4	3.185	80.6
3"	3.307	84	3.717	94.2
3.5"	3.898	99	4.299	109.2
4"	4.331	110	4.820	122.2
4.5"	4.843	123	5.244	133.2
6"	6.118	155.4	6.695	170.4

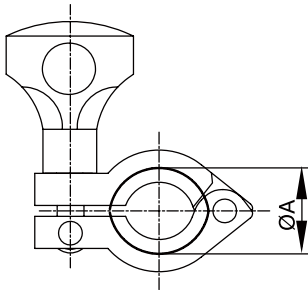
13MHHM Single Hinge Heavy Duty Clamp



Size	A		B	
	inch	mm	inch	mm
0.5"-0.75"	0.787	20	1.062	28
1"-1.5"	1.748	44.4	2.122	53.6
2"	2.276	57.8	2.654	67
2.5"	2.811	71.4	3.185	80.6
3"	3.307	84	3.717	94.2
3.5"	3.898	99	4.299	109.2
4"	4.331	110	4.820	122.2
4.5"	4.843	123	5.244	133.2
6"	6.118	155.4	6.695	170.4
8"	8.071	205	8.695	220
10"	10.118	257	10.695	272
12"	12.126	308	12.695	323

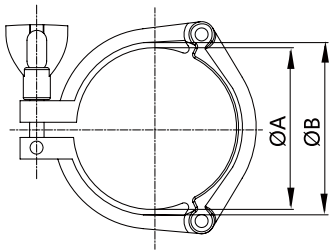
CLAMP FITTINGS

13MHHS /A13MHHS** Fractional Clamp



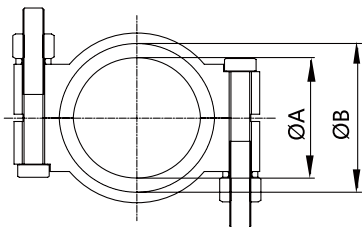
Size		A	
in	mm	in	mm
0.75	19.0	1.13	28.6

13MHHS 3-Segment Heavy Duty Clamp



Size	A		B	
	inch	mm	inch	mm
1"-1.5"	1.748	44.4	2.122	53.6
2"	2.276	57.8	2.654	67
2.5"	2.811	71.4	3.185	80.6
3"	3.307	84	3.717	94.2
3.5"	3.898	99	4.299	109.2
4"	4.331	110	4.820	122.2
4.5"	4.843	123	5.244	133.2
6"	6.118	155.4	6.695	170.4

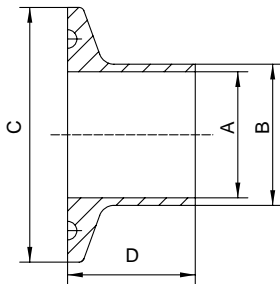
13MHP High Pressure Clamp



Size	A		B	
	inch	mm	inch	mm
1"-1.5"	1.748	44.4	2.046	53.6
2"	2.276	57.8	2.578	67
2.5"	2.811	71.4	3.110	80.6
3"	3.307	84	3.640	94.2
3.5"	3.898	99	4.299	109.2
4"	4.331	110	4.744	122.2
4.5"	4.843	123	5.244	133.2
6"	6.118	155.4	6.632	170.4

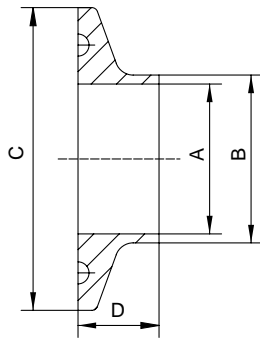
CLAMP FITTINGS

L14AM7 Long Weld Ferrule



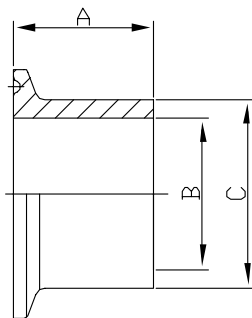
Size	A		B		C		D	
	inch	mm	inch	mm	inch	mm	inch	mm
0.5"	0.370	9.4	0.500	12.7	0.992	25.2	1.126	28.6
0.75"	0.620	15.7	0.750	19.05	0.992	25.2	1.126	28.6
1"	0.874	22.2	1.000	25.4	1.988	50.5	1.126	28.6
1.5"	1.370	34.8	1.500	38.1	1.988	50.5	1.126	28.6
2"	1.870	47.5	2.000	50.8	2.520	64.0	1.126	28.6
2.5"	2.370	60.2	2.500	63.5	3.051	77.5	1.126	28.6
3"	2.870	72.9	3.000	76.2	3.583	91.0	1.126	28.6
4"	3.834	97.4	4.000	101.6	4.685	119.0	1.126	28.6
6"	5.782	146.9	6.000	152.4	6.567	166.8	1.500	38.1
8"	3.845	97.7	8.000	203.2	8.571	217.7	1.500	38.1
10"	9.732	247.2	10.000	254.0	10.571	268.5	1.500	38.1
12"	11.732	298	12.000	304.8	12.571	319.3	1.750	44.4

14WMP Short Weld Ferrule



Size	A		B		C		D	
	inch	mm	inch	mm	inch	mm	inch	mm
0.5"	0.370	9.4	0.500	12.7	0.992	25.2	0.500	12.7
0.75"	0.620	15.75	0.750	19.05	0.992	25.2	0.500	12.7
1"	0.870	22.1	1.000	25.4	1.988	50.5	0.500	12.7
1.5"	1.370	34.8	1.500	38.1	1.988	50.5	0.500	12.7
2"	1.870	47.5	2.000	50.8	2.520	64.0	0.500	12.7
2.5"	2.370	60.2	2.500	63.5	3.051	77.5	0.500	12.7
3"	2.870	72.9	3.000	76.2	3.583	91.0	0.500	12.7
4"	3.834	97.4	4.000	101.6	4.685	119.0	0.625	15.8
6"	5.782	146.9	6.000	152.4	6.567	166.8	0.875	22.2
8"	7.760	197.1	8.000	203.2	8.571	217.7	0.875	22.2
10"	9.782	248.5	10.000	254.0	10.571	268.5	0.875	22.2
12"	11.760	298.7	12.000	304.8	12.571	319.3	0.875	22.2

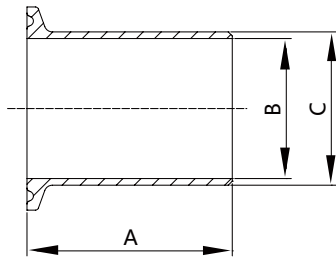
14MPW Heavy Wall Tank Weld Ferrule (Spud)



Size	A		B		C	
	inch	mm	inch	mm	inch	mm
0.5"	1.625	41.3	0.321	8.1	0.502	12.7
0.75"	1.625	41.3	0.574	14.6	0.75	19.0
1"	1.625	41.3	0.87	22.1	1.16	29.4
1.5"	1.625	41.3	1.37	34.8	1.676	42.6
2"	1.75	44.4	1.87	47.5	2.192	55.7
2.5"	1.75	44.4	2.37	60.2	2.708	68.8
3"	1.813	46.0	2.87	72.9	3.224	81.9
4"	2.125	54.0	3.834	97.4	4.256	108.1
6"	2.5	63.5	5.758	146.2	6.192	157.3
8"	2.5	63.5	7.758	197.0	8.192	208.1

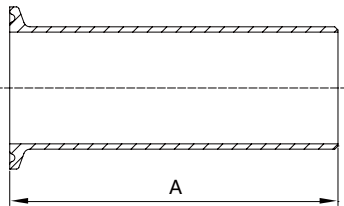
CLAMP FITTINGS

TL14AM7 Automatic Weld Ferrules



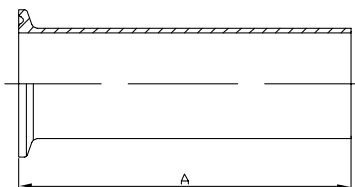
Size	A		B		C	
	inch	mm	inch	mm	inch	mm
0.5"	1.75	44.4	0.37	9.4	0.5	12.7
0.75	1.75	44.4	0.62	15.7	0.75	19.05
1"	1.75	44.4	0.87	22.1	1	25.4
1.5"	1.75	44.4	1.37	34.8	1.5	38.1
2"	2.25	57.1	1.87	47.5	2	50.8
2.5"	2.25	57.1	2.37	60.2	2.5	63.5
3"	2.25	57.1	2.87	72.9	3	76.2
4"	2.25	57.1	3.834	97.4	4	101.6
6"	3	76.2	5.782	146.9	6	152.4

14WLMP Light Wall Tank Weld Ferrule



Size	A	
	inch	mm
0.5"	3	76.2
0.75"	3	76.2
1"	3	76.2
1.5"	3	76.2
2"	3	76.2
2.5"	3	76.2
3"	4	101.6
4"	4	101.6
6"	6	152.4
8"	6	152.4
10"	6	152.4
12"	6	152.4

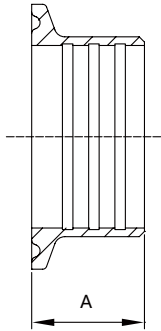
14MPHT Rubber Hose Adapter



Size	A	
	inch	mm
1"	4.5	114.3
1.5"	4.5	114.3
2"	4.5	114.3
2.5"	4.5	114.3
3"	4.5	114.3
4"	4.625	117.5

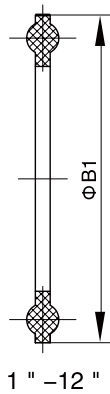
CLAMP FITTINGS

14RMP Roll-On Ferrule(expanding)



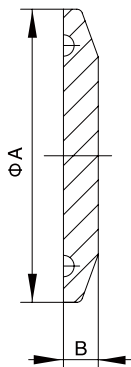
Size	A	
	inch	mm
1"	0.75	19.0
1.5"	1.125	28.6
2"	1.313	33.4
2.5"	1.375	34.9
3"	1.438	36.5
4"	1.5	38.1

40MP Gasket



Size	B1	
	inch	mm
0.5"-0.75"	0.858	21.8
1"-1.5"	1.988	50.5
2"	2.520	64
2.5"	3.051	77.5
3"	3.583	91
4"	4.685	119
4.5"	5.118	130
6"	6.567	166.8
8"	8.571	217.7
10"	10.571	268.5
12"	12.571	319.3

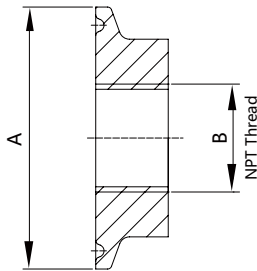
16AMP Solid End Cap



Size	A		B	
	inch	mm	inch	mm
0.5"-0.75"	0.992	25.2	0.252	6.4
	1.339	34	0.252	6.4
1"-1.5"	1.988	50.5	0.252	6.4
2"	2.520	64	0.252	6.4
2.5"	3.051	77.5	0.252	6.4
3"	3.583	91.0	0.252	6.4
4"	4.685	119.0	0.311	7.9
6"	6.567	166.8	0.437	11.1
8"	8.571	217.7	0.437	11.1
10"	10.571	268.5	0.437	11.1
12"	12.571	319.3	0.437	11.1

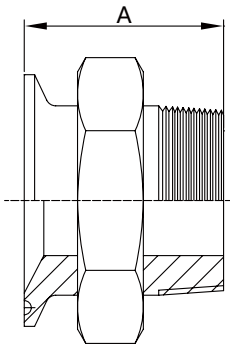
CLAMP FITTINGS

23BMP Thermometer Cap



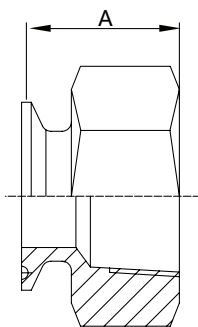
Size	A		B
	inch	mm	inch
1"	1.988	50.5	1/2 NPT
1.5"	1.988	50.5	3/4 NPT
2"	2.520	64.0	3/4 NPT
2.5"	3.050	77.5	3/4 NPT
3"	3.580	91.0	3/4 NPT
4"	4.685	119.0	3/4 NPT

21MP Clamp X Male NPT Adapter



Size	A	
	inch	mm
0.5"	2	40.1
0.75"	1.787	45.4
1"	2.25	57.15
1.5"	2.25	57.15
2"	2.638	67.0
2.5"	2.875	73.0
3"	3.07	78.0
4"	3.155	80.1

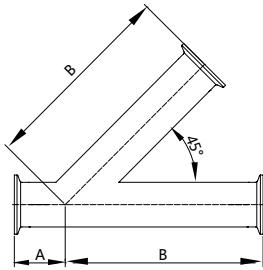
22MP Clamp X Female NPT Adapter



Size	A	
	inch	mm
0.5"	1.5	38.1
0.75"	1.625	41.3
1"	1.625	41.3
1.5"	2.25	57.1
2"	2.406	59.4
2.5"	2.187	53.1
3"	2.187	55.5
4"	2.625	66.7

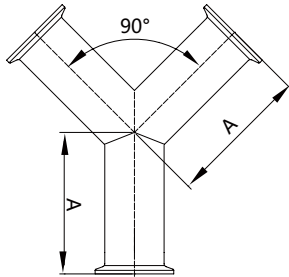
CLAMP FITTINGS

28AMP 45 Degree Clamp End Lateral WYE



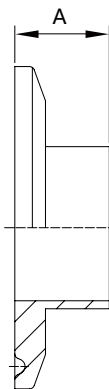
Size	A		B	
	inch	mm	inch	mm
0.5"	1.5	38.1	5.5	139.7
0.75"	1.5	38.1	5.5	139.7
1"	1.5	38.1	5.5	139.7
1.5"	1.687	42.8	6.688	169.9
2"	2.125	54.0	7.625	193.7
2.5"	2	50.8	9	228.6
3"	2.375	60.3	9.375	238.1
4"	2.687	68.2	11.375	288.9
6"	4.375	111.1	13.25	336.5

28BMP Clamp End True Y



size	A	
	inch	mm
0.5"	2.5	63.5
0.75"	2.5	63.5
1"	3.5	88.9
1.5"	3.5	88.9
2"	4.5	114.3
2.5"	5.5	139.7
3"	6.5	165.1
4"	8.625	219.1
6"	8.75	222.2

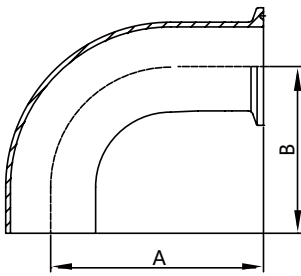
31WMP Reducing Ferrule



size	A	
	inch	mm
0.75"×0.5"	0.5	12.7
1"×0.5"	0.5	12.7
1"×0.75"	0.5	12.7
1.5"×1"	0.5	12.7
1.5"×0.5"	0.5	12.7
1.5"×0.75"	0.5	12.7
2"×1"	0.5	12.7
2"×1.5"	0.5	12.7
2.5"×2"	0.5	12.7
3"×2"	0.5	12.7
4"×3"	0.625	15.9

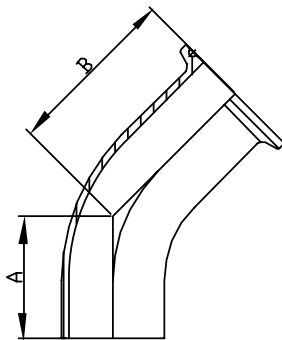
CLAMP FITTINGS

L2CM Weld X Tri-Clamp 90° Elbow



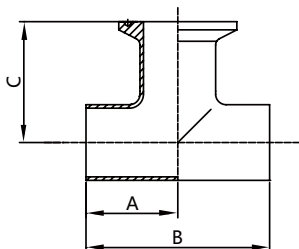
Size	A		B	
	inch	mm	inch	mm
1"	2.563	65.1	2.063	52.4
1.5"	3.438	87.3	2.938	74.6
2"	4.563	115.9	4.063	103.2
2.5"	5.688	144.5	5.188	131.8
3"	6.813	173.0	6.313	160.3
4"	8.938	227.0	8.313	211.1

L2KM Clamp X Weld 45° Elbow



Size	A		B	
	inch	mm	inch	mm
1"	1.188	30.2	1.688	42.9
1.5"	1.625	41.3	2.125	54.0
2"	2.312	58.7	2.812	71.4
2.5"	3	76.2	3.5	88.9
3"	3.688	93.7	4.188	106.4
4"	4.812	122.2	5.437	138.1

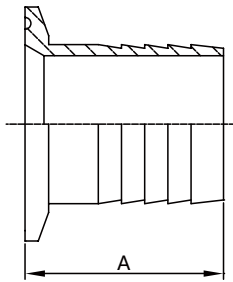
7WWM Weld X Clamp Outlet Tee



Size	A		B		C	
	inch	mm	inch	mm	inch	mm
1"	1.125	28.6	2.25	57.1	1.625	41.3
1.5"	1.656	42.1	3.312	84.1	2.156	54.8
2"	2.063	52.4	4.125	104.8	2.563	65.1
2.5"	2.344	59.5	4.688	119.1	2.844	72.2
3"	2.594	65.9	5.188	131.8	3.094	78.6
4"	3.438	87.3	6.875	174.6	4.063	103.2

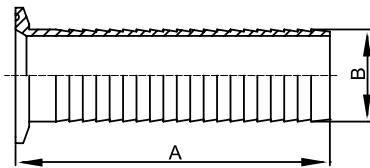
CLAMP FITTINGS

14MPHR Rubber Hose Adapter



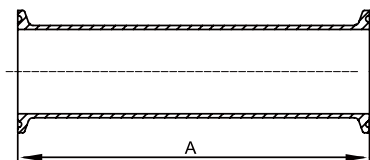
Size	A	
	inch	mm
1"	1.687	42.8
1.5"	1.687	42.8
2"	2.312	58.7
2.5"	2.343	59.5
3"	3.093	78.5
4"	3.406	86.5
6"	3.406	86.5
8"	3.406	86.5

14MPHRL Brewery Hose Barb Adapters



Size	A		B	
	inch	mm	inch	mm
1"	3.5	88.9	1.045	26.5
1.5"	5	127	1.545	39.2
2"	5	127	2.045	51.9
2.5"	5.5	139.7	2.545	64.6
3"	5.5	139.7	3.045	77.3
4"	5.5	139.7	4.045	102.7

Spool Assembly



Size	A	
	inch	mm
0.5"	2.25	57.1
0.75"	2.25	57.1
1"	2.25	57.1
1.5"	2.25	57.1
2"	2.25	57.1
2.5"	2.25	57.1
3"	2.25	57.1
4"	2.25	57.1
6"	3	76.2



WELD FITTINGS

WELD FITTINGS

Welded fittings give processors the highest degree of corrosion resistance and sanitation. Their streamlined design, flush joints and butt-weld assembly provides full, unrestricted flow for truly hygienic, permanent welded systems.

Weld Fittings meet



requirements.



Accessories Specification

Size Range: 1/2"OD through 12" OD

Materials: T304, T316L

Surface Finish:

Mechanically Polished

Internal 20Ra (0.51µm), External 32Ra (0.8µm)

No. 7 - ID & OD

No. 5 - OD only

No. 3 - ID only

No. 1 - unpolished

Customized - upon request

For Example

Description	Size	Material	Surface	Quantity
2WK bend	2"	1.4301	NO.7	500

Notes For Dimension Tables

- All Dimensions are in mm.
- Wall Thickness: Fittings 1.0"-3.0" sizes are manufactured with 16 gauge (0.065") wall thickness.
The 4.0" tube size is manufactured with 14 gauge (0.083") wall thickness.

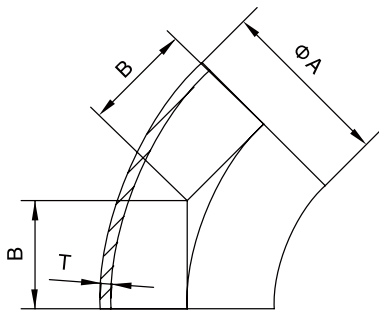
WELD FITTINGS

Weld Type

VN*	ALF* LAVA*	WAUKESH*/SP*	P&E	STEE* & O'BRIE*
E2S	L2S	2CW	L2S	L2S
E2C	L2CM	2CKW	L2CM	L2CM
E2T	L2C	2TW	L2C	L2C
E2F	L2F	2FW	L2F	L2F
E2KS	L2KS	2KW	L2KS	L2KS
E2KC	L2KM	2KKW	L2KM	L2KM
E2KT	L2K	2KT	—	L2K
E2KP	L2P	2KP	—	L2P
E2WU	L2WU	2WU	2WU	2WU
E7WWW	L7WWW	7W	7WWW	7WWW
E7WWC	L7WWM	7WVK	7WWM	7WWM
E7WWT	L7WWT	7WWT	—	—
E7WCW	L7WMW	7WKW	7WMW	7WMW
E7WTW	L7WTW	7WTW	—	—
E7WCC	L7WMM	7WKK	7WMM	7WMM
E7WTT	L7WTT	7WTT	—	—
E7CCW	L7MMW	7KKW	7MMW	7MMW
E7TTW	L7TTW	7TTW	—	—
E7RWWW	L7RWWW	7WR	7WR	7WR
E9WWWWW	L9WWWWW	9W	9WWWWW	9WWWWW
E31WW	L31	31W	31W	31W
E32WW	L32	32W	32W	32W
E28WA	L28WA	28WA	28WA	28WA
E28WB	L28WB	28WB	28WB	28WB
E2WK			2WK	2WK

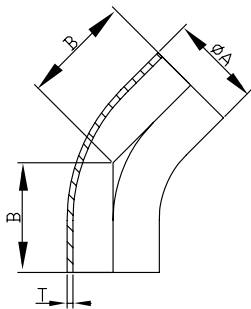
WELD FITTINGS

2WK Bend 45°, No Tangent



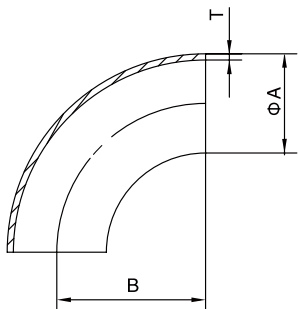
Size	A		B		T	
	inch	mm	inch	mm	inch	mm
1.0"	1.000	25.4	0.625	15.8	0.065	1.65
1.5"	1.500	38.1	0.937	23.8	0.065	1.65
2.0"	2.000	50.8	1.250	31.7	0.065	1.65
2.5"	2.500	63.5	1.562	39.6	0.065	1.65
3.0"	3.000	76.2	1.875	47.6	0.065	1.65
4.0"	4.000	101.6	2.500	63.5	0.083	2.11

L2KS Polished Long Elbow 45° With Tangent



Size	A		B		T	
	inch	mm	inch	mm	inch	mm
1.0"	1.000	25.4	1.189	30.2	0.065	1.65
1.5"	1.500	38.1	1.626	41.3	0.065	1.65
2.0"	2.000	50.8	2.311	58.7	0.065	1.65
2.5"	2.500	63.5	3.000	76.2	0.065	1.65
3.0"	3.000	76.2	3.689	93.7	0.065	1.65
4.0"	4.000	101.6	4.811	122.2	0.083	2.11

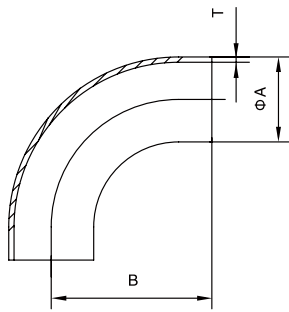
2WCL Elbow 90°, No Tangent



Size	A		B		T	
	inch	mm	inch	mm	inch	mm
1.0"	1.000	25.4	1.500	38.1	0.065	1.65
1.5"	1.500	38.1	2.252	57.2	0.065	1.65
2.0"	2.000	50.8	3.000	76.2	0.065	1.65
2.5"	2.500	63.5	3.750	95.25	0.065	1.65
3.0"	3.000	76.2	4.500	114.3	0.065	1.65
4.0"	4.000	101.6	6.000	152.4	0.083	2.11
6.0"	6.000	152.4	9.000	228.6	0.109	2.77
8.0"	8.000	203.2	12.00	304.8	0.109	2.77

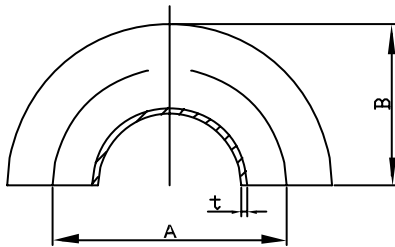
WELD FITTINGS

L2S Long Elbow 90° With Tangent



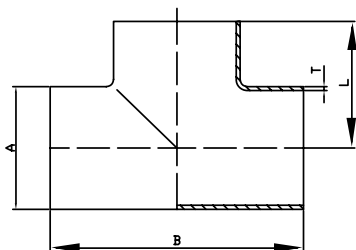
Size	A		B		T	
	inch	mm	inch	mm	inch	mm
1.0"	1.000	25.4	2.063	52.4	0.065	1.65
1.5"	1.500	38.1	2.937	74.6	0.065	1.65
2.0"	2.000	50.8	4.063	103.2	0.065	1.65
2.5"	2.500	63.5	5.189	131.8	0.065	1.65
3.0"	3.000	76.2	6.311	160.3	0.065	1.65
4.0"	4.000	101.6	8.311	211.1	0.083	2.11

2WU 180° Return Bend Weld End



Size	B		A		T	
	inch	mm	inch	mm	inch	mm
1.0"	3	76.2	2	50.8	0.065	1.65
1.5"	4.5	114.3	3	76.2	0.065	1.65
2.0"	6	152.4	4	101.6	0.065	1.65
2.5"	7.5	190.5	5	127	0.065	1.65
3.0"	9	228.6	6	152.4	0.065	1.65
4.0"	12	304.8	8	203.2	0.083	2.11

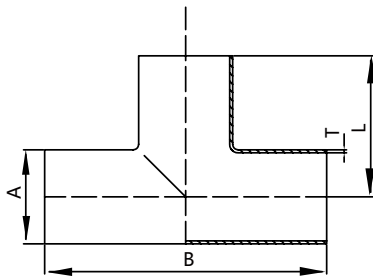
7WWW Short Equal Tee, No Tangent



Size	A		B		L		T	
	inch	mm	inch	mm	inch	mm	inch	mm
1.0"	1.000	25.4	2.252	57.2	1.126	28.6	0.065	1.65
1.5"	1.500	38.1	3.315	84.2	1.657	42.1	0.065	1.65
2.0"	2.000	50.8	4.126	104.8	2.063	52.4	0.065	1.65
2.5"	2.500	63.5	4.685	119.0	2.343	59.5	0.065	1.65
3.0"	3.000	76.2	5.189	131.8	2.594	65.9	0.065	1.65
4.0"	4.000	101.6	6.874	174.6	3.437	87.3	0.083	2.11
6.0"	6.000	152.4	10	254	5	127	0.109	2.77
8.0"	8.000	203.2	14	356	7	178	0.109	2.77

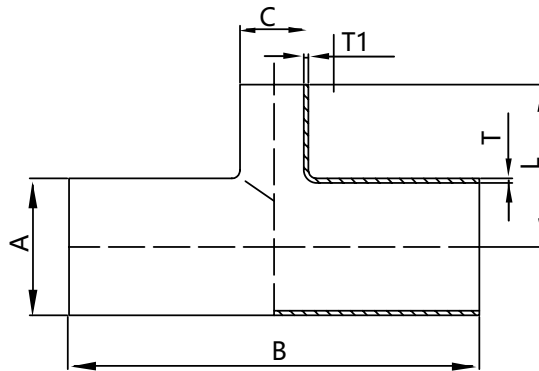
WELD FITTINGS

7W Long Equal Tee, With Tangent



Size	A		B		L		T	
	inch	mm	inch	mm	inch	mm	inch	mm
0.5"	0.500	12.7	3.750	95.2	1.875	47.6	0.065	1.65
0.75"	0.750	19.05	4.000	101.6	2.000	50.8	0.065	1.65
1.0"	1.000	25.4	3.750	95.2	1.875	47.6	0.065	1.65
1.5"	1.500	38.1	4.500	114.3	2.250	57.2	0.065	1.65
2.0"	2.000	50.8	6.000	152.4	3.000	76.2	0.065	1.65
2.5"	2.500	63.5	6.000	152.4	3.000	76.2	0.065	1.65
3.0"	3.000	76.2	6.500	165.2	3.250	82.6	0.065	1.65
4.0"	4.000	101.6	7.750	196.8	3.875	98.4	0.083	2.11
6.0"	6.000	152.4	11.250	285.7	5.625	142.9	0.109	2.77
8.0"	8.000	203.2	14.000	355.6	7.000	177.8	0.120	3.05

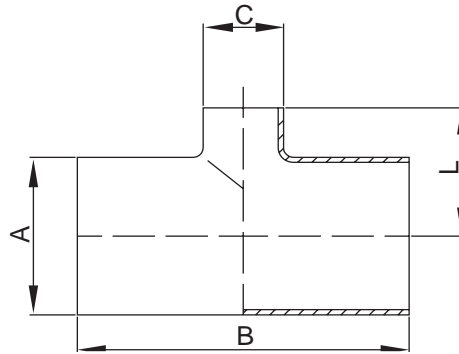
7RW Long Reducing Tee



Size	A		C		B		L		T		T1	
	inch	mm	inch	mm	inch	mm	inch	mm	inch	mm	inch	mm
1.5"×1.0"	1.500	38.1	1.000	25.4	4.500	114.3	2.125	54.0	0.065	1.65	0.065	1.65
2.0"×1.0"	2.000	50.8	1.000	25.4	6.000	152.4	2.374	60.3	0.065	1.65	0.065	1.65
2.0"×1.5"	2.000	50.8	1.500	38.1	6.000	152.4	2.500	63.5	0.065	1.65	0.065	1.65
2.5"×1.5"	2.500	63.5	1.500	38.1	6.000	152.4	2.750	69.8	0.065	1.65	0.065	1.65
2.5"×2.0"	2.500	63.5	2.000	50.8	6.000	152.4	3.250	82.5	0.065	1.65	0.065	1.65
3.0"×1.5"	3.000	76.2	1.500	38.1	6.500	165.1	3.000	76.2	0.065	1.65	0.065	1.65
3.0"×2.0"	3.000	76.2	2.000	50.8	6.500	165.1	3.500	88.9	0.065	1.65	0.065	1.65
3.0"×2.5"	3.000	76.2	2.500	63.5	6.500	165.1	3.250	82.5	0.065	1.65	0.065	1.65
4.0"×2.0"	4.000	101.6	2.000	50.8	7.750	196.8	4.000	101.6	0.083	2.11	0.065	1.65
4.0"×2.5"	4.000	101.6	2.500	63.5	7.750	196.8	3.750	95.2	0.083	2.11	0.065	1.65
4.0"×3.0"	4.000	101.6	3.000	76.2	7.750	196.8	3.750	95.2	0.083	2.11	0.065	1.65

WELD FITTINGS

7RWWW Short Reducing Tee

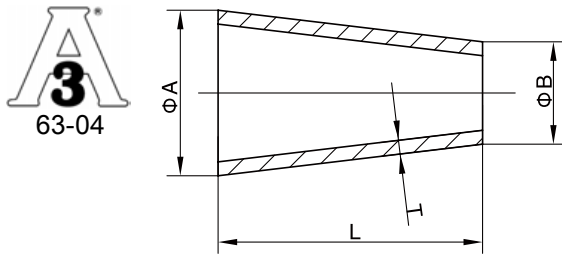


Size	A		B		C		L	
	inch	mm	inch	mm	inch	mm	inch	mm
0.75"x0.5"	.750	19.0	4.000	101.6	0.500	12.7	2.000	50.8
1"x0.5"	1.000	25.4	4.250	107.9	0.500	12.7	2.125	54.0
1"x0.75"	1.000	25.4	4.250	107.9	0.750	19.0	2.125	54.0
1.5"x0.5"	1.500	38.1	4.750	120.6	0.500	12.7	2.375	60.3
1.5"x0.75"	1.500	38.1	4.750	120.6	0.750	19.0	2.375	60.3
1.5"x1"	1.500	38.1	3.312	84.12	1.000	25.4	1.375	34.9
2"x0.5"	2.000	50.8	5.750	146.0	0.500	12.7	2.625	66.7
2"x0.75"	2.000	50.8	5.750	146.0	0.750	19.0	2.625	66.7
2"x1"	2.000	50.8	4.124	104.7	1.000	25.4	1.625	41.3
2"x1.5"	2.000	50.8	4.124	104.7	1.500	38.1	1.906	48.4
2.5"x1.5"	2.500	63.5	4.688	119.1	1.500	38.1	2.156	54.8
2.5"x2"	2.500	63.5	4.688	119.1	2.000	50.8	2.312	58.7
3"x1.5"	3.000	76.2	5.188	131.8	1.500	38.1	2.406	61.1
3"x2"	3.000	76.2	5.188	131.8	2.000	50.8	2.562	65.1
3"x2.5"	3.000	76.2	5.188	131.8	2.500	63.5	2.594	65.9
4"x1.5"	4.000	101.6	6.876	174.6	1.500	38.1	2.906	73.8
4"x2"	4.000	101.6	6.876	174.6	2.000	50.8	3.062	77.8
4"x2.5"	4.000	101.6	6.876	174.6	2.500	63.5	3.094	78.6
4"x3"	4.000	101.6	6.876	174.6	3.000	76.2	3.094	78.6
6"x2"	6.000	152.4	11.250	285.7	2.000	50.8	4.500	114.3
6"x3"	6.000	152.4	11.250	285.7	3.000	76.2	4.875	123.8
6"x4"	6.000	152.4	11.250	285.7	4.000	101.6	5.125	130.2

**T304 and T316L are available.

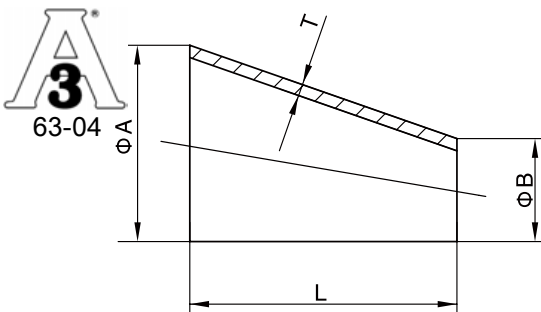
WELD FITTINGS

31W Concentric Reducer Butt Weld



Size	A		B		L		T	
	inch	mm	inch	mm	inch	mm	inch	mm
1.5"×1.0"	1.500	38.1	1.000	25.4	2.000	50.8	0.065	1.65
2.0"×1.0"	2.000	50.8	1.000	25.4	4.000	101.6	0.065	1.65
2.0"×1.5"	2.000	50.8	1.500	38.1	2.000	50.8	0.065	1.65
2.5"×1.0"	2.500	63.5	1.000	25.4	6.000	152.4	0.065	1.65
2.5"×1.5"	2.500	63.5	1.500	38.1	4.000	101.6	0.065	1.65
2.5"×2.0"	2.500	63.5	2.000	50.8	2.000	50.8	0.065	1.65
3.0"×1.0"	3.000	76.2	1.000	25.4	8.000	203.2	0.065	1.65
3.0"×1.5"	3.000	76.2	1.500	38.1	6.000	152.4	0.065	1.65
3.0"×2.0"	3.000	76.2	2.000	50.8	4.000	101.6	0.065	1.65
3.0"×2.5"	3.000	76.2	2.500	63.5	2.000	50.8	0.065	1.65
4.0"×1.5"	4.000	101.6	1.500	38.1	10.000	254.0	0.083	2.11
4.0"×2.0"	4.000	101.6	2.000	50.8	8.000	203.2	0.083	2.11
4.0"×2.5"	4.000	101.6	2.500	63.5	6.000	152.4	0.083	2.11
4.0"×3.0"	4.000	101.6	3.000	76.2	4.000	101.6	0.083	2.11
8.0"×2.0"	8.000	203.2	2.000	50.8	6.000	152.4	0.109	2.77

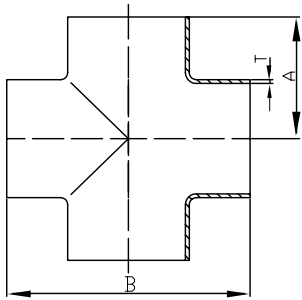
32W Eccentric Reducer Butt Weld



Size	A		B		L		T	
	inch	mm	inch	mm	inch	mm	inch	mm
1.5"×1.0"	1.500	38.1	1.000	25.4	2.000	50.8	0.065	1.65
2.0"×1.0"	2.000	50.8	1.000	25.4	4.000	101.6	0.065	1.65
2.0"×1.5"	2.000	50.8	1.500	38.1	2.000	50.8	0.065	1.65
2.5"×1.0"	2.500	63.5	1.000	25.4	6.000	152.4	0.065	1.65
2.5"×1.5"	2.500	63.5	1.500	38.1	4.000	101.6	0.065	1.65
2.5"×2.0"	2.500	63.5	2.000	50.8	2.000	50.8	0.065	1.65
3.0"×1.0"	3.000	76.2	1.000	25.4	8.000	203.2	0.065	1.65
3.0"×1.5"	3.000	76.2	1.500	38.1	6.000	152.4	0.065	1.65
3.0"×2.0"	3.000	76.2	2.000	50.8	4.000	101.6	0.065	1.65
3.0"×2.5"	3.000	76.2	2.500	63.5	2.000	50.8	0.065	1.65
4.0"×1.5"	4.000	101.6	1.500	38.1	10.000	254.0	0.083	2.11
4.0"×2.0"	4.000	101.6	2.000	50.8	8.000	203.2	0.083	2.11
4.0"×2.5"	4.000	101.6	2.500	63.5	6.000	152.4	0.083	2.11
4.0"×3.0"	4.000	101.6	3.000	76.2	6.000	101.6	0.083	2.11

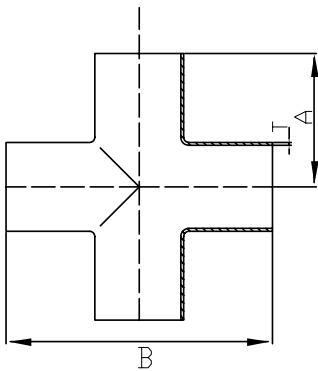
WELD FITTINGS

9WWW Short Equal Cross



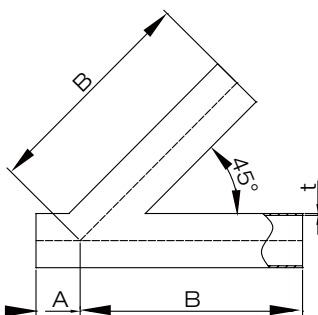
Size	B		A		T	
	inch	mm	inch	mm	inch	mm
1.0"	2.250	57.2	1.126	28.6	0.065	1.65
1.5"	3.312	84.2	1.657	42.1	0.065	1.65
2.0"	4.125	104.6	2.063	52.4	0.065	1.65
2.5"	4.687	119.0	2.343	59.5	0.065	1.65
3.0"	5.187	131.8	2.594	65.9	0.065	1.65
4.0"	6.875	174.6	3.437	87.3	0.083	2.11

9W Long Equal Cross



Size	A		B		t	
	inch	mm	inch	mm	inch	mm
1"	1.875	47.6	3.75	95.2	0.065	1.65
1.5"	2.25	57.1	4.5	114.3	0.065	1.65
2"	3	76.2	6	152.4	0.065	1.65
2.5"	3	76.2	6	152.4	0.065	1.65
3"	3.25	82.5	6.5	165.1	0.065	1.65
4"	3.875	98.4	7.75	196.8	0.083	2.11

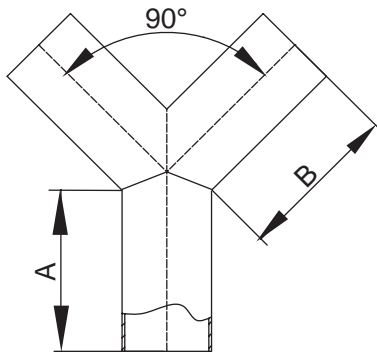
28WA 45° Butt Lateral Wye



Size	A		B		t	
	inch	mm	inch	mm	inch	mm
1"	1	25.4	5	127	0.065	1.65
1.5"	1.188	30.2	6.188	157.2	0.065	1.65
2"	1.625	41.3	7.125	181	0.065	1.65
2.5"	1.5	38.1	8.5	215.9	0.065	1.65
3"	1.875	47.6	8.875	225.4	0.065	1.65
4"	2.015	51.2	10.75	273.0	0.083	2.11

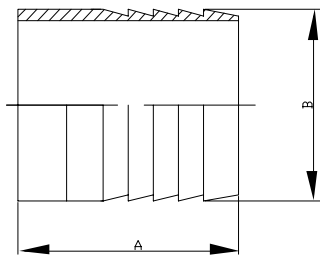
WELD FITTINGS

28WB True Wye Butt Weld Ends



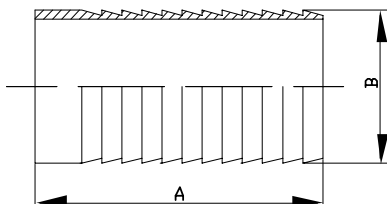
Size	A		B	
	inch	mm	inch	mm
1"	2.000	50.8	2.438	61.9
1.5"	2.000	50.8	2.438	61.9
2"	2.625	66.7	3.250	82.5
2.5"	3.370	85.6	4.125	104.8
3"	4.000	101.6	4.875	123.8
4"	5.375	136.5	5.375	136.5

14WHR Weld Hose Adapters



Size	A		t	
	inch	mm	inch	mm
0.5"	1.5	38.1	0.5	12.7
0.75"	1.5	38.1	0.75	19.05
1"	1.688	42.9	1	25.4
1.5"	1.688	42.9	1.5	38.1
2"	2.315	58.7	2	50.8
2.5"	2	50.8	2.5	63.5
3"	3.093	78.6	3	76.2
4"	3.406	86.5	4	101.6

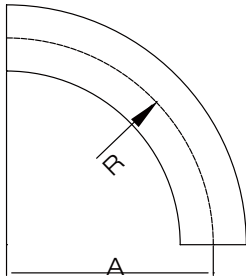
14WHRL Long Weld Hose Adapters



Size	A		B	
	inch	mm	inch	mm
1"	3	76.2	1.03	26.2
1.5"	4.5	114.3	1.53	38.9
2"	4.5	114.3	2.03	51.6
2.5"	5	127	2.53	64.2
3"	5	127	3.03	77.0
4"	4.875	123.825	4.03	102.4

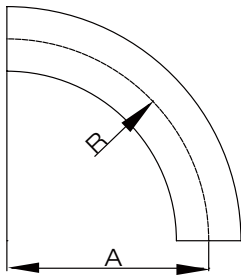
WELD FITTINGS

Polished 12" 90°Weld Sweep Elbows-2SXL



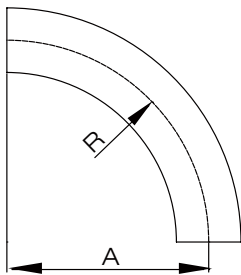
Size	A		R	
	inch	mm	inch	mm
1.5"	12	304.8	12	304.8
2"	12	304.8	12	304.8
3"	12	304.8	12	304.8
4"	12	304.8	12	304.8

Polished 18" 90°Weld Sweep Elbows-2SXL



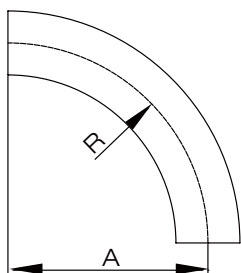
Size	A		R	
	inch	mm	inch	mm
1.5"	18	457.2	18	457.2
2"	18	457.2	18	457.2
2.5"	18	457.2	18	457.2
3"	18	457.2	18	457.2

Polished 24" 90°Weld Sweep Elbows-2SXL



Size	A		R	
	inch	mm	inch	mm
1.5"	24	609.6	24	609.6
2"	24	609.6	24	609.6
2.5"	24	609.6	24	609.6
3"	24	609.6	24	609.6

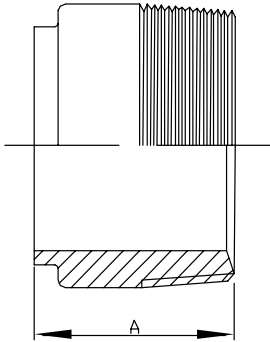
Polished 36" 90°Weld Sweep Elbows-2SXL



Size	A		R	
	inch	mm	inch	mm
3"	36	914.4	36	914.4
4"	36	914.4	36	914.4

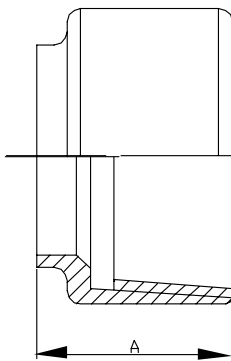
WELD FITTINGS

19WB Weld X Male NPT Adapter



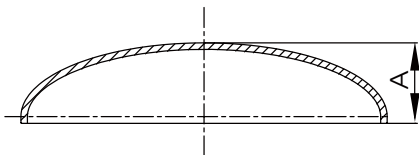
Size	A	
	inch	mm
0.5"	1.625	41.3
0.75"	1.625	41.3
1"	1.75	44.4
1.5"	1.75	44.4
2"	1.812	46.0
2.5"	2.312	58.7
3"	2.5	63.5
4"	2.562	65.1

22WB Weld X Female NPT Adapter



Size	A	
	inch	mm
0.5"	1.25	31.7
0.75"	1.625	41.3
1"	1.75	44.4
1.5"	1.75	44.4
2"	1.812	46.0
2.5"	2.312	58.7
3"	2.5	63.5
4"	2.5	63.5

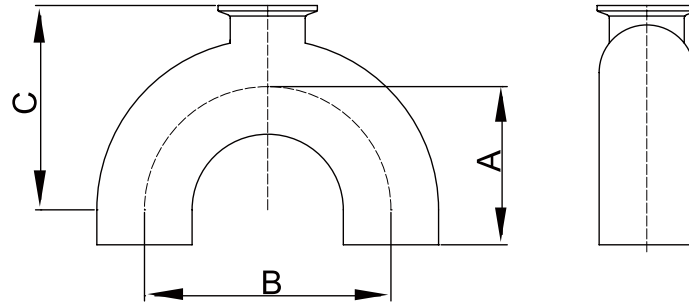
16W Butt Weld Dome Cap



Size	A	
	inch	mm
1"	0.375	9.5
1.5"	0.562	14.3
2"	0.75	19.05
2.5"	1	25.4
3"	1.25	31.7
4"	1.5	38.1
6"	1.875	47.6
8"	2.5	63.5

WELD FITTINGS

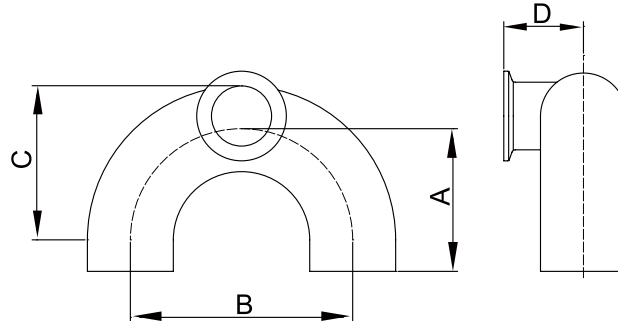
180 ° Bottom Outlet Use Point Fitting



Size	A		B		C	
	inch	mm	inch	mm	inch	mm
1"×0.5"	3.75	95.25	4.5	114.3	5	127.0
1"×0.75"	3.75	95.25	4.5	114.3	5	127.0
1.5"×0.5"	4.5	114.3	6	152.4	6	152.4
1.5"×0.75"	4.5	114.3	6	152.4	6	152.4
1.5"×1"	4.5	114.3	6	152.4	6.13	155.7
2"×0.5"	5	127	6	152.4	6.75	171.5
2"×0.75"	5	127	6	152.4	6.75	171.5
2"×1"	5	127	6	152.4	7	177.8
2"×1.5"	5	127	6	152.4	6.75	171.5
2.5"×0.5"	5.75	146.05	7.5	190.5	7.75	177.8
2.5"×0.75"	5.75	146.05	7.5	190.5	7.75	171.5
2.5"×1"	5.75	146.05	7.5	190.5	7.94	196.9
2.5"×1.5"	5.75	146.05	7.5	190.5	7.75	196.9
2.5"×2"	5.75	146.05	7.5	190.5	8.13	206.5
3"×0.5"	6.5	165.1	9	228.6	8.75	222.3
3"×0.75"	6.5	165.1	9	228.6	8.75	222.3
3"×1"	6.5	165.1	9	228.6	9	228.6
3"×1.5"	6.5	165.1	9	228.6	8.81	223.8
3"×2"	6.5	165.1	9	228.6	8.75	222.3
3"×2.5"	6.5	165.1	9	228.6	9.13	231.9
4"×0.5"	8.5	215.9	12	304.8	11.25	285.8
4"×0.75"	8.5	215.9	12	304.8	11.25	285.8
4"×1"	8.5	215.9	12	304.8	11.56	293.6
4"×1.5"	8.5	215.9	12	304.8	11.44	290.6
4"×2"	8.5	215.9	12	304.8	11.25	285.8
4"×2.5"	8.5	215.9	12	304.8	11.63	295.4
4"×3"	8.5	215.9	12	304.8	11.63	295.4

WELD FITTINGS

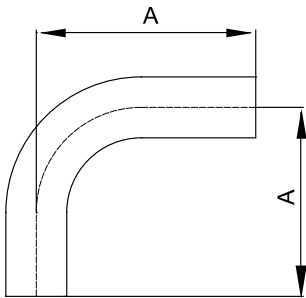
180° Side Outlet Use-Point Fitting



Size	A		B		C		D	
	inch	mm	inch	mm	inch	mm	inch	mm
1"×0.75"	3.75	95.2	4.5	114.3	3.88	98.6	1.25	31.8
1.5"×0.75"	4.5	114.3	6	152.4	4.88	124.0	1.75	44.5
1.5"×1"	4.5	114.3	6	152.4	4.75	120.7	1.75	44.5
2"×0.75"	5	127	6	152.4	5.63	143.0	1.75	44.5
2"×1"	5	127	6	152.4	5.5	139.7	1.75	44.5
2"×1.5"	5	127	6	152.4	5.25	133.4	1.75	44.5
2.5"×1"	5.75	146.0	7.5	190.5	6.5	165.1	1.75	44.5
2.5"×1.5"	5.75	146.0	7.5	190.5	6.25	158.8	1.75	44.5
2.5"×2"	5.75	146.0	7.5	190.5	6	152.4	2.25	57.2
3"×1"	6.5	165.1	9	228.6	7.5	190.5	2.25	57.2
3"×1.5"	6.5	165.1	9	228.6	7.25	184.2	2.25	57.2
3"×2"	6.5	165.1	9	228.6	7	177.8	2.25	57.2
3"×2.5"	6.5	165.1	9	228.6	6.75	171.5	2.25	57.2
4"×1"	8.5	215.9	12	304.8	10	254.0	-	-
4"×1.5"	8.5	215.9	12	304.8	9.75	247.7	-	-
4"×2"	8.5	215.9	12	304.8	9.5	241.3	-	-
4"×2.5"	8.5	215.9	12	304.8	9.25	235.0	-	--
4"×3"	8.5	215.9	12	304.8	9	228.6	-	

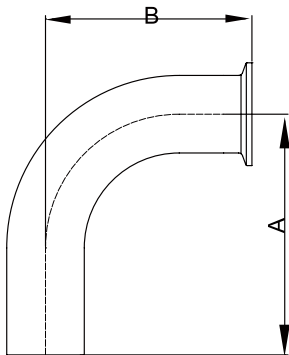
WELD FITTINGS

2S 90° Weld Elbows



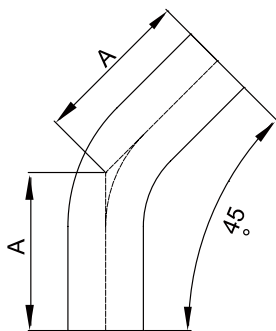
size	A	
	inch	mm
0.5"	3	76.2
0.75"	3	76.2
1"	3	76.2
1.5"	3.75	95.25
2"	4.75	120.65
2.5"	5.5	139.7
3"	6.25	158.75
4"	8	203.2
6"	11.5	292.1

2CM Weld X Tri-Clamp 90° Elbow



Size	A		B	
	inch	mm	inch	mm
0.5"	3	76.2	1.63	41.4
0.75"	3	76.2	1.63	41.4
1"	3	76.2	2	50.8
1.5"	3.75	95.25	2.75	69.85
2"	4.75	120.65	3.5	88.9
2.5"	5.5	139.7	4.25	107.95
3"	6.25	158.75	5	127
4"	8	203.2	6.63	168.4
10"	0.687	17.4	16	406.4

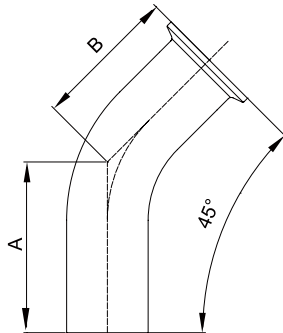
2KS 45° Weld Elbows



size	A	
	inch	mm
0.5"	2.25	57.2
0.75"	2.25	57.2
1"	2.25	57.2
1.5"	2.5	63.5
2"	3	76.2
2.5"	3.38	85.9
3"	3.63	92.2
4"	4.5	114.3
6"	6.25	158.8

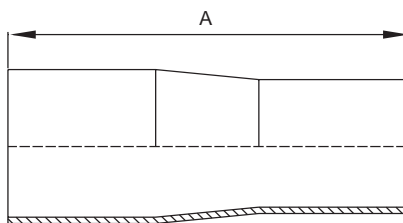
WELD FITTINGS

2KM Clamp X Weld 45° Elbow



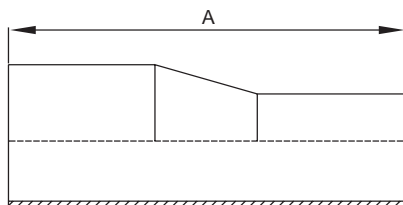
Size	A		B	
	inch	mm	inch	mm
1"	1.188	30.2	1.688	42.9
1.5"	1.625	41.3	2.125	54.0
2"	2.312	58.7	2.812	71.4
2.5"	3.000	76.2	3.500	88.9
3"	3.688	93.7	4.188	106.4
4"	4.812	122.2	5.437	138.1

31 Concentric Reducer Automatic Weld



size	A	
	inch	mm
0.75"×0.5"	4	101.6
1"×0.5"	4.5	114.3
1"×0.75"	4	101.6
1.5"×0.5"	5.5	139.7
1.5"×0.75"	5	127.0
1.5"×1"	5	127.0
2"×0.75"	7.25	184.2
2"×1"	7.25	184.2
2"×1.5"	5.25	133.4
2.5"×1.5"	7.5	190.5
2.5"×2"	5.5	139.7
3"×1.5"	9.25	235.0
3"×2"	7.5	190.5
3"×2.5"	5.5	139.7
4"×2"	11.75	298.5
4"×2.5"	9.75	247.7
4"×3"	7.75	196.9
6"×3"	10	254.0
6"×4"	10	254.0

32 Eccentric Reducer Automatic Weld





SANITARY VALVES

BUTTERFLY VALVES



Design and Features

- Compact and robust design
- Available in sizes D N25/1" to DN 150/6"
- The size of multi-position handle up to DN100/4"
- The size of pull handle up to DN125/150/6"
- Manual handle, pneumatic actuator and electric actuator can be exchangeable with each other
- Low pressure losses
- The valve body can be changeable with any kind of connection

Technical Data

- Max.pressure: 10 bar (DN-25/100)
8 bar (DN-125/150)
- Min.pressure: 0.2 bar p.abs
- Operating temperature: -10°C to +120°C (EPDM)




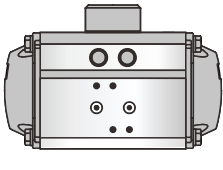
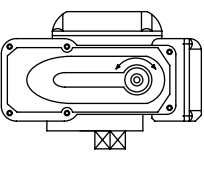
Minimum torque range of the actuator









Standard size	Torque(Kgf.m)
1.0"	0.3
1.5"	0.4
2.0"	0.5
2.5"	1.2
3.0"	2
4.0"	2.5
5.0"	3
6.0"	3.5
8.0"	4.5


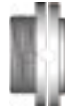










BUTTERFLY VALVES

S = Welded end
 G = Male
 K/M = Liner / nut
 FI = Flange
 CI = Clamp

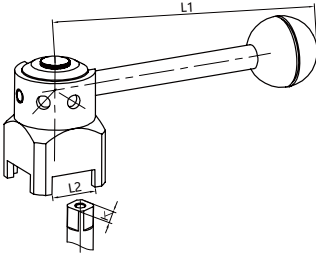
Pneumatal			
Stainless Steel Pneumatic Actuator	Aluminium Pneumatic Actuator	Electric Actuator	
			

Manually Operated			
hand lever Blue type A.	hand lever Black type A.	hand lever Blue type B.	hand lever Black type B.
			
hand lever Blue type C.	hand lever stainless steel A	hand lever stainless steel B	hand lever stainless steel
			

Connection Type					
S - S	G - S	G - G	K/M - G	K/M - S	FI (PN10) - G FI - FI (PN10)
					
CI - CI	Intermediate - butterfly Valve				
		S - S			

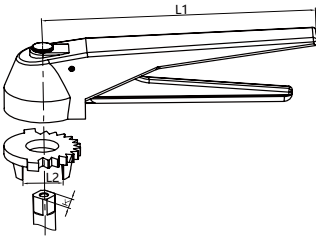
Seals			
Silicone	EPDM	FKM	HNBR
			

BUTTERFLY VALVES



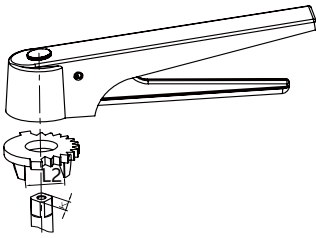
Pulling Handle

Size	L1	L2	K x K
0.5"-1.5"	126	20.2	8x8
2"	133	20.2	10x10
2.5"-3"	144	22.2	10x10
3.5"-4"	160	22.2	11x11
5"-6"	220	22.2	11x11
8"	284	30.2	14x14



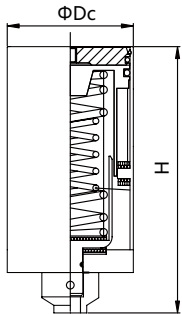
Plastic Multi-Position Handle

Size	L1	L2	K x K
0.5"-1.5"	150	20.2	8x8
2"-3"	150	20.2	10x10
3.5"-4"	150	22.2	11x11



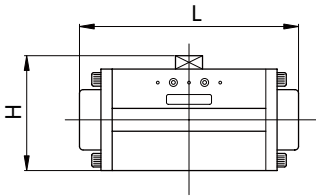
Stainless Steel Multi-Position Handle

Size	L1	L2	K x K
0.5"-1.5"	155	20.2	8x8
2"-3"	155	20.2	10x10
3.5"-6"	155	22.2	11x11
8"	230	30.2	14x14



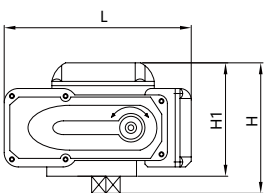
Stainless Steel Pneumatic Actuator

Size	Dc	H	match with butterfly valve	match with ball valve
Ø85	85.0	180.5	1"-4"	1"-2"
Ø108	108	223	5"-6"	2.5"-3"
Ø133	133	400	8"	4"



Aluminium Pneumatic Actuator

Size	H	L	match with butterfly valve	match with ball valve
AT1	91.0	131.0	1/2"-1 1/4"	1/2"-1"
AT2	112.0	185.0	2"-4"	1 1/4"-2"
AT3	128.0	230.0	5"	2 1/2"-3"
AT4	154.0	290.0	6"-8"	3 1/2"-4"

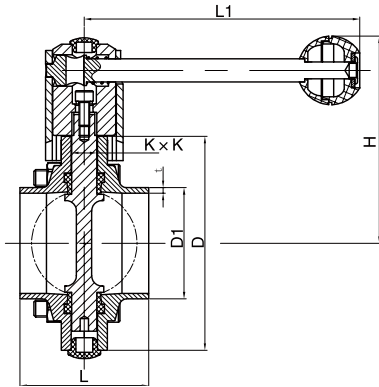


Electric Actuator

Size	L	H	H1	match with butterfly valve	match with ball valve
HL-05	157.5	115.0	103.0	1"-4"	1"-2"
HL-10	208.0	124.0	115.0	5"-8"	2.5"-3"
HL-20	280.0	135.0	109.0		4"

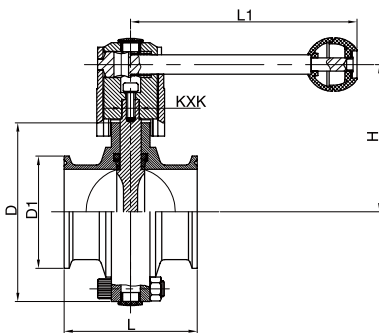
BUTTERFLY VALVES

Welded Butterfly Valve



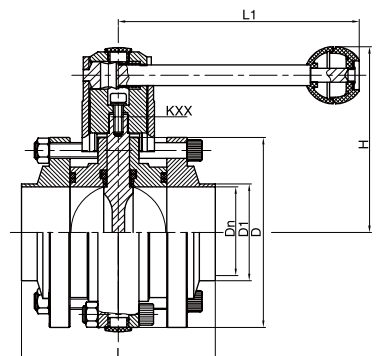
Size	D1	D	L	L1	H	KxK
1/2"	12.7	78	50	126	86	8x8
3/4"	19	78	50	126	86	8x8
1"	25.4	78	50	126	86	8x8
1 1/4"	31.8	78	50	126	86	8x8
1 1/2"	38.1	86	50	126	90	8x8
2"	50.8	102	52	133	102	8x8
2 1/2"	63.5	115	56	144	109	10x10
3"	76.2	128	56	144	115	10x10
3.5"	89	139	60	144	123.5	11x11
4"	102	154	64	144	131	11x11
5"	127	185	80	220	146.5	11x11
6"	152.4	215	90	220	161.5	11x11
8"	203.2	285	90	284	199	14x14

Clamped Butterfly Valve



Size	D1	D	L	L1	H	KxK
1/2"	25.4	78	66	126	86	8x8
3/4"	25.4	78	66	126	86	8x8
1"	50.5	78	66	126	86	8x8
1 1/4"	50.5	78	66	126	86	8x8
1 1/2"	50.5	86	70	126	90	8x8
2"	64	102	76	133	102	10x10
2 1/2"	77.5	115	80	144	109	10x10
3"	91	128	84	144	115	10x10
3.5"	106	139	86	144	123.5	11x11
4"	119	154	104	144	131	11x11
5"	144.5	185	122	220	146.5	11x11
6"	167	215	146	220	161.5	11x11
8"	217.4	285	166.8	284	199	14x14

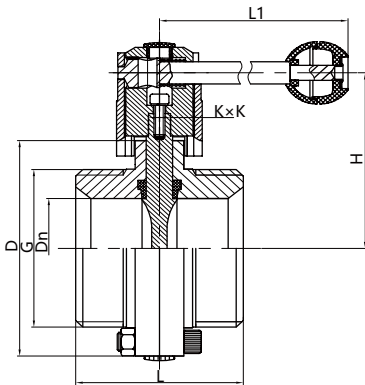
Three-Piece Butterfly Valve



Size	D1	D	L	L1	H	KxK
1/2"	12.7	78	100	126	86	8x8
3/4"	19	78	100	126	86	8x8
1"	25.4	78	100	126	86	8x8
1 1/4"	31.8	78	100	126	86	8x8
1 1/2"	38.1	86	100	126	90	8x8
2"	50.8	102	104	133	102	10x10
2 1/2"	63.5	115	112	144	109	10x10
3"	76.2	128	112	144	115	10x10
3.5"	89	139	120	144	123.5	11x11
4"	101.6	154	128	144	131	11x11
5"	127	185	160	220	146.5	11x11
6"	152.4	215	180	220	161.5	11x11
8"	203.2	285	180	284	199	14x14

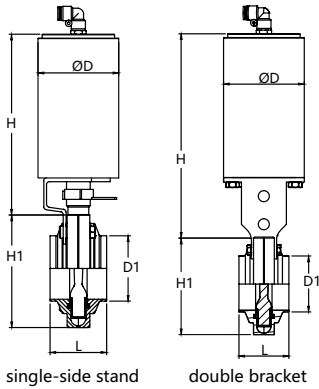
BUTTERFLY VALVES

Threaded Butterfly Valve



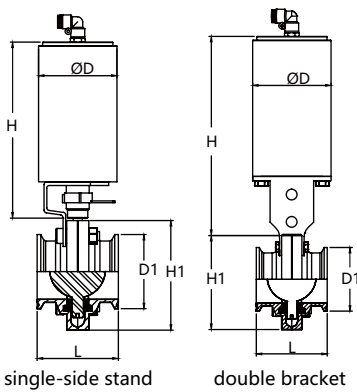
Size	DN	D	L	L1	H	G	Kxk
1"	22.1	78	66	126	86	37.1×1/8Acme	8×8
1 1/4"	28.8	78	70	126	86	45.9×1/8Acme	8×8
1 1/2"	34.8	86	70	126	90	50.6×1/8Acme	8×8
2"	47.5	102	76	133	102	64.1×1/8Acme	10×10
2 1/2"	60.5	115	80	144	109	77.6×1/8Acme	10×10
3"	72.9	128	84	144	115	91.1×1/8Acme	10×10
4"	97.4	154	104	160	131	119.2×1/8Acme	11×11

Pneumatic Welded Butterfly Valve



Size	D1	L	D	H1	H
1"	25.4	50	85	72	172.5
1 1/2"	38.1	50	85	78	172.5
2"	50.8	52	85	101	172.5
2.5"	63.5	56	85	115	172.5
3"	76.2	60	85	130	172.5
4"	101.6	64	85	162	172.5

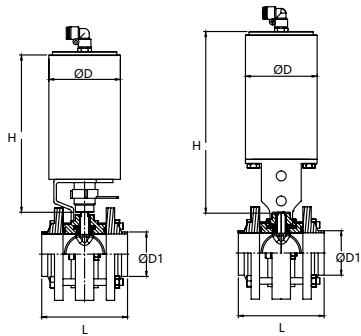
Pneumatic Clamp Butterfly Valve



Size	D1	L	D	H	H1
1"	50.5	66	85	172.5	72
1 1/2"	50.5	70	85	172.5	78
2"	64	76	85	172.5	101
2.5"	77.5	80	85	172.5	115
3"	91	84	85	172.5	130
4"	119	104	85	172.5	162

BUTTERFLY VALVES

Pneumatic Three-piece Butterfly Valve

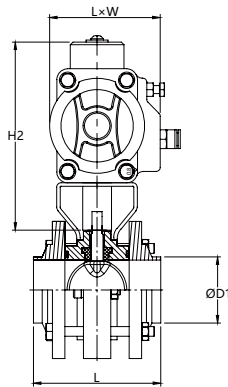


single-side stand

double bracket

Size	D1	L	D	H
1"	25.4	102	85	172.5
1 1/2"	38.1	104	85	172.5
2"	50.8	107	85	172.5
2.5"	63.5	106	85	172.5
3"	76.2	103	85	172.5
4"	101.6	115	85	172.5

Pneumatic Three-piece Butterfly Valve



Size	D1	L	H2	LxW
1"	25.4	102	102	140.5x60.5
1 1/2"	38.1	104	133	158.5x83
2"	50.8	107	133	158.5x83
2.5"	63.5	106	133	158.5x83
3"	76.2	103	150	210.5x94.5
4"	101.6	115	150	210.5x94.5

CHECK VALVES



Operating principle

- The valve opens when the pressure of the fluid exceeds the pressure exerted by the pump spring. When the two pressures are equalised, the valve closes. A stronger counter-pressure allows the valve to close.

Materials

- Casing/shaft: AISI 304/ AISI 316L
- Spring: AISI 304/ AISI 316L
- Seal: EPDM according to FDA 177.2600
- Surface finishing: $Ra \leq 0.8 \mu m$



Options

- Seals in NBR, FPM (Viton) or PTFE. All of them according to FDA 177.2600
- Connections: weld, thread, clamp, DIN, SMS, RJT, IDF, ISO, 3A

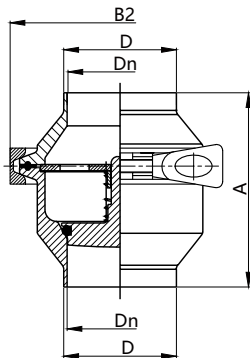
Technical specifications

- Max. pressure: 10 bar
- Opening pressure: 0.3 bar (DN-25), 0.2 bar (DN-32/40), 0.1 bar (DN-50/100)
- Working temperature: $-10^{\circ}C$ to $+120^{\circ}C$ (EPDM)



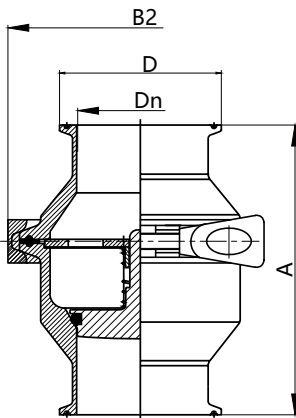
CHECK VALVES

Welded Check Valve



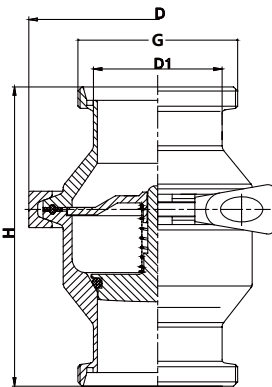
Size	A	B2	D	Dn
1/2"	70	76.5	12.7	9.4
3/4"	70	76.5	19.05	15.8
1"	70	76.5	25.4	22.1
1.5"	70	87	38.1	34.8
2"	80	100	50.8	47.5
2.5"	90	115	63.5	60.2
3"	100	128	76.2	72.9
4"	100	164	101.6	97.4

Clamped Check Valve



Size	A	B2	D	Dn
1/2"	81	76.5	25.4	9.4
3/4"	81	76.5	25.4	15.8
1"	95	76.5	50.5	22.1
1.5"	95	87	50.5	34.8
2"	105	100	64	47.5
2.5"	115	115	77.5	60.2
3"	125	128	91	72.9
4"	137	164	119	97.4

Threaded Check Valve



Size	H	D1	D	G
1"	108	25.4	76.5	37.13×1/8 Acme
1.25"	113	31.8	76.5	45.9×1/8 Acme
1.5"	113	38.1	87	50.65×1/8 Acme
2"	126	50.8	100	64.1×1/8 Acme
2.5"	141	63.5	115	77.6×1/8 Acme
3"	152	76.2	128	91.1×1/8 Acme
4"	167	101.6	164	119.25×1/6 Acme

BALL CHECK VALVES

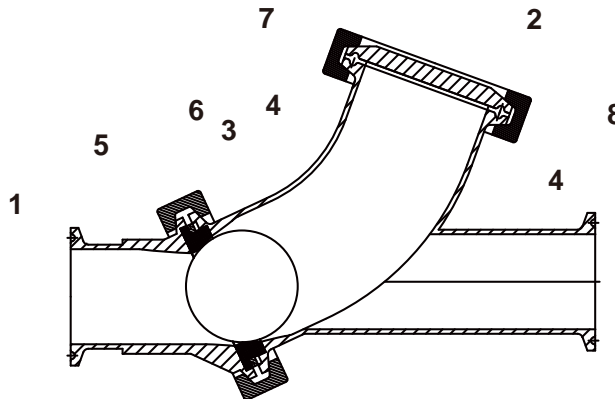
Information

- Precision machined seat to ensure positive shut-off
- Two-piece construction for easier alignment during installation
- Other connections available upon request
- Buna-N and Viton® elastomers
- Polished ID and OD
- All metal contact surfaces of T316L stainless steel
- Sizes range from 1 1/2" through 3"
- Buna Ball & Gaskets Standard

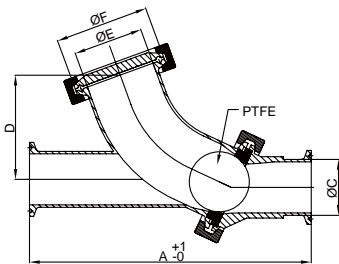


Parts Breakdown

1. Seat body - (Clamp)
- 1W. Seat body - (Weld)
2. Cap
- 3B. Ball-(Buna-N)
- 3V. Ball-(Viton®)
- 3P. Ball-(PTFE)
4. Angle body
- 4W. Angle body-(Weld)
5. Body clamp
- 6B. Body gasket-(Buna-N)
- 6V. Body gasket-(Viton®)
7. Cap clamp
- 8B. Cap gasket-(Buna-N)
- 8V. Cap gasket-(Viton®)



Y Ball Check Valve



Size	A	C	D	E	F
1 1/2"	7.50	1.50	3.30	1.87	2.52
2"	8.50	2.00	3.90	2.33	3.05
2 1/2"	10.00	2.50	4.50	2.87	3.58
3"	11.50	3.00	5.30	3.83	4.69

BALL VALVES



Applications

It's widely used in Beverage, Brewing, Oil Refinery, Cosmetic, Chemical Industries.

Design and features




- Free of maintenances
- Compact and portable
- Small operating torque
- Gasket complies with PTFE FDA 177.2600
- Hand lever can be installed on the side of the valve body, no matter what direction it flows.
- Connection ends: thread, clamp, weld, flange, DIN, SMS, RJT, FIL.
- It can match with pneumatic and electric actuators.
- Material for the part contacted with media is AISI 304/316L. Other part is AISI 304
- Type of valves: one-way ball valve, three-piece ball valve, three-way ball valve
- Type of cores: T type, L type, direct type.
- Material: AISI 304, 316L

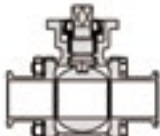
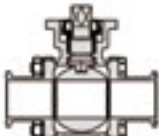
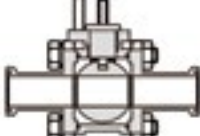
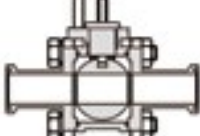
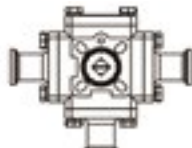
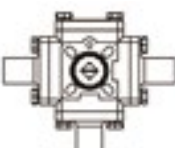




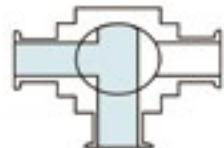



BALL VALVES



Modular system

S = Welded end
 G = Male
 K/M = Liner / nut
 Fl = Flange
 Cl = Clamp

Pneumatical		
140.5x60.5	158.5x83	210.5x94.5
		

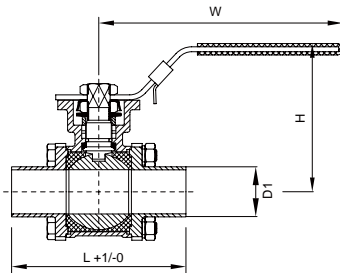
Body Configuration			
Cl-Cl	S-S	Cl-Cl	S-S
			
Cl-Cl	S-S		
			

Ball Type			
"T" Port			
			
"L" Port			
			

Sealing Material	
Encapsulated	Standard
	

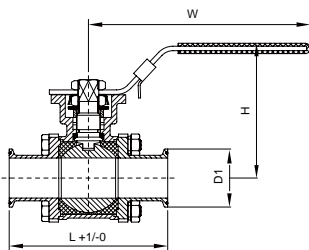
BALL VALVES

Weld Ball Valve With High Platform



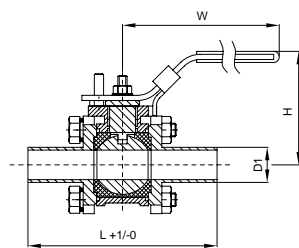
Size	D1	L	W	H
1/2"	12.7	90	130	70
3/4"	19.05	102.2	125	80
1"	25.4	115.3	166	90
1 1/2"	38.1	137.6	193	105
2"	50.8	156	212	112
2 1/2"	63.5	171	370	174
3"	76.2	196.7	370	185
4"	101.6	242	400	205

Clamp Ball Valve With High Platform



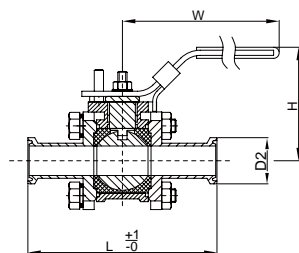
Size	D2	L	W	H
1/2"	25.2	90	130	70
3/4"	25.2	102.2	125	80
1"	50.5	115.3	166	90
1 1/2"	50.5	137.6	193	105
2"	64	156	212	112
2 1/2"	77.5	171	370	174
3"	91	196.7	370	185
4"	119	242	400	205

Weld Ball Valve With Low Platform



Size	D1	L	W	H
1/2"	12.7	91	130	62
3/4"	19.05	102.5	130	68.5
1"	25.4	114.8	176	74.5
1 1/4"	31.8	125	170	74.5
1 1/2"	38.1	137.3	226	98
2"	50.8	156.4	226	100
2 1/2"	63.5	171	326	123.5
3"	76.2	196.7	325	150
4"	101.6	242	332	159

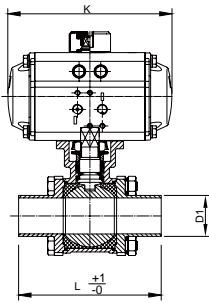
Clamp Ball Valve With Low Platform



Size	D2	L	W	H
1/2"	25.2	91	130	62
3/4"	25.2	102.5	130	68.5
1"	50.5	114.8	176	74.5
1 1/4"	50.5	125	170	74.5
1 1/2"	50.5	137.3	226	98
2"	64	156.4	226	100
2 1/2"	77.5	171	326	123.5
3"	91	196.7	325	150
4"	119	242	332	159

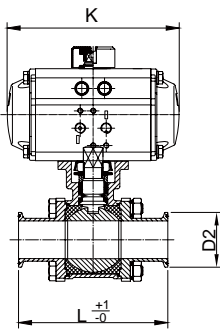
BALL VALVES

Pneumatic Weld Ball Valve



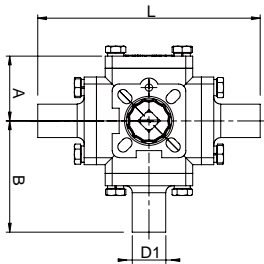
Size	D1	L	K
1/2"	12.7	90	130
3/4"	19.05	102.2	125
1"	25.4	115.3	166
1 1/2"	38.1	137.6	193
2"	50.8	156	212
2 1/2"	63.5	171	370
3"	76.2	196.7	370
4"	101.6	242	400

Pneumatic Clamp Ball Valve



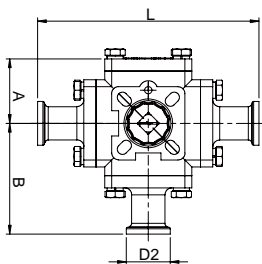
Size	D2	L	K
1/2"	25.2	90	130
3/4"	25.2	102.2	125
1"	50.5	115.3	166
1 1/2"	50.5	137.6	193
2"	64	156	212
2 1/2"	77.5	171	370
3"	94	196.7	370
4"	119	242	400

Sanitary Three-way Weld Ball Valve



Size	D1	A	B	L
1/2"	12.7	34	59	118
3/4"	19.05	37	63.5	127
1"	25.4	41	76.3	152.6
1 1/2"	38.1	52.5	87.5	175
2"	50.8	65	100.7	201.4
2 1/2"	63.5	75	113.85	227.7
3"	76.2	95	130.3	260.6
4"	101.6	120	160	320

Sanitary Three-way Clamp Ball Valve



Size	D2	A	B	L
1/2"	25.2	34	59	118
3/4"	25.2	37	63.5	127
1"	50.5	41	76.3	152.6
1 1/2"	50.5	52.5	87.5	175
2"	64	65	100.7	201.4
2 1/2"	77.5	75	113.85	227.7
3"	91	95	130.3	260.6
4"	119	120	160	320

DIAPHRAGM VALVES



Applications

- Diaphragm valves, manually or pneumatically operated, are specifically designed for use on hygienic and aseptic processes in the pharmaceutical industries.
- The valve is excellent for flow control as well as for open/close duties.

Operating Principles

- The diaphragm provides the body seal as well as the seat seal. There are no paths to the outside environment and as such the valve is suitable for aseptic processes.
- As the valve is closed, a pressure pad which supports the diaphragm moves towards the sealing face on the body. As the pressure plate moves, the diaphragm flexes and will be forced down onto the seat area in the centre of the body thus closing off the flow path through the body.
- The inter-relationship of body to the pressure plate prevents over compression of the diaphragm.
- The valve can be actuated either manually or pneumatically and controlled by control tops and solenoid valves.





Technical specifications





- Max. pressure: 10 BAR(145PSI)
- Working temperature: -10 °C to +120 °C (EPDM) -14 °F to 248 °F (+140 °C (SIP, max. 30 min) 284 °F)






DIAPHRAGM VALVES

Actuator			
01	02	03	04
Composite material	Composite material	Stainless steel	Stainless steel
			

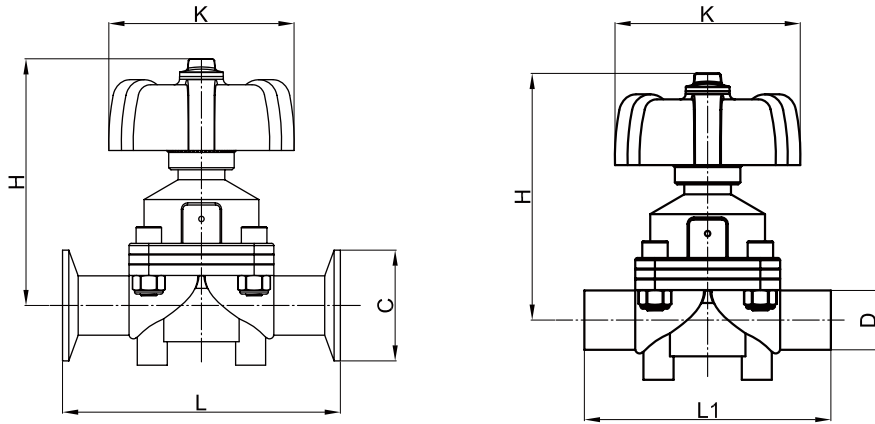
Diaphragms	
Elastomer diaphragms EPDM	TFE/EPDM, PTFE/FPM PTFE diaphragms PTFE/EPDM, PTFE/FPM
	

Valve Body Versions			
Straight-through Type	T-type	Multi-way	SAP / GMP
			

Connections		
Clamp	Unions	Flange
		

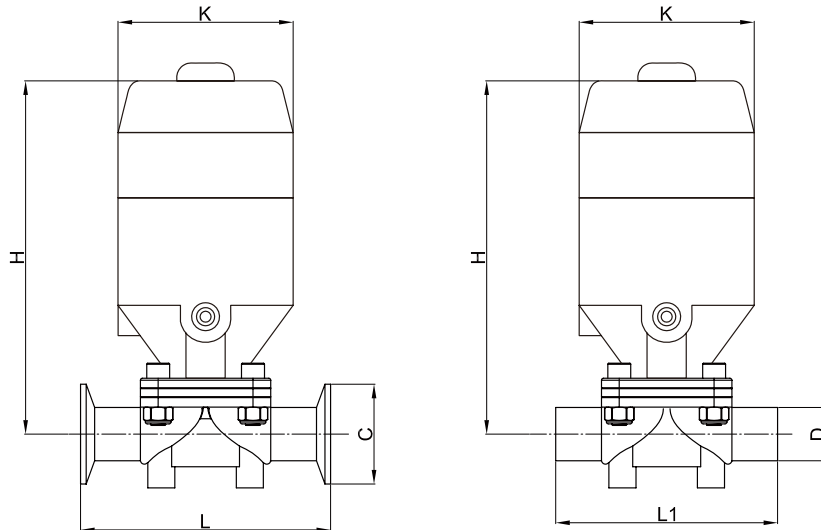
DIAPHRAGM VALVES

Manual Diaphragm Valve



Size	L	L1	K	D	C
0.5"	108	102	65	12.7	50.5
0.75"	126	120	87	19.05	50.5
1"	126	120	87	25.4	50.5
1.5"	160	140	104	38.1	50.5
2"	193	150	114	50.8	64

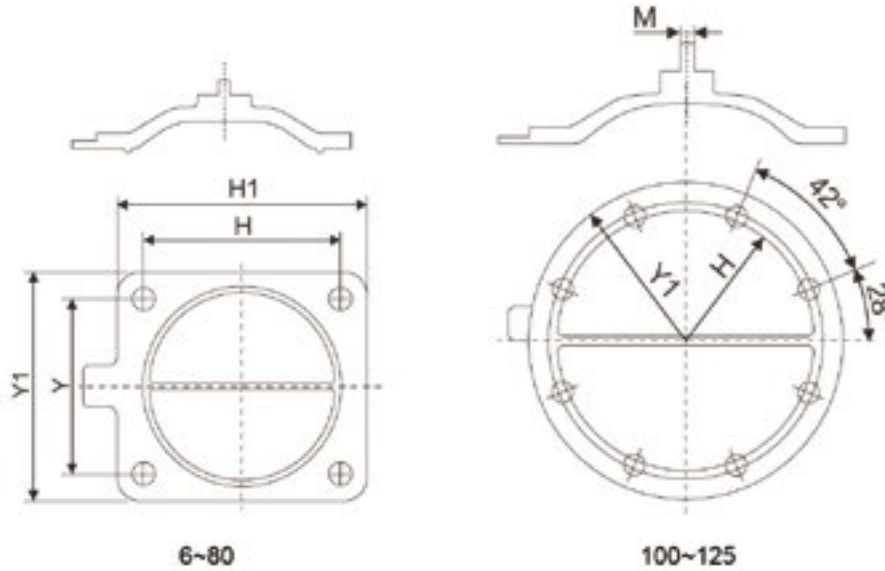
Pneumatic Diaphragm Valve



Size	L	L1	K	D	C
0.5"	108	125	62	12.7	50.5
0.75"	126	152	72	19.05	50.5
1"	126	154	72	25.4	50.5
1.5"	160	193	92	38.1	50.5
2"	193	225	114	50.8	64

DIAPHRAGM VALVES

Manual Diaphragm Valve



Size	H×Y	H×Y1	M	K
6	22×22	32×32	9.5	5
8	22×22	32×32	9.5	5
10	22×22	32×32	9.5	5
15	37×32	50×46	M4	6
20	57×47	70×65	M6	9
25	57×47	70×65	M6	9
32	70×64	97×89	M6	11
40	70×64	97×89	M6	11
50	85×75	110×103	M6	13
65	105×91	134×126	M8	15
70	127×114	185×156	M8	15
80	127×114	185×156	M8	15
100	194×8	135	M8	15
125	194×8	135	M8	15

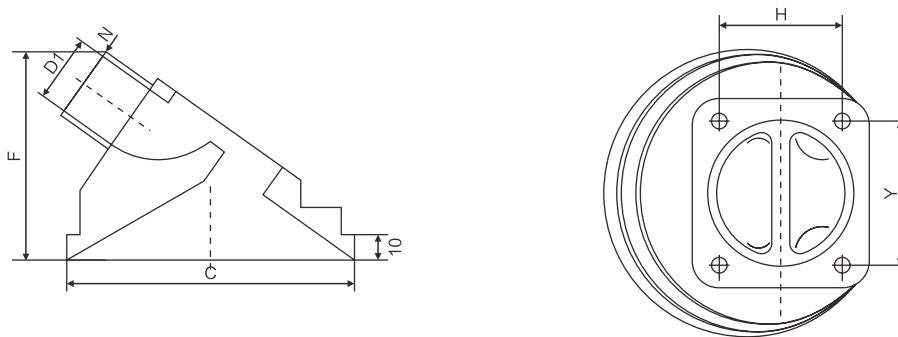


TANK BOTTOM VALVES

Aseptic Diaphragm Tank Bottom Valve

Tank bottom valve is applied to proportioning vessel for emptying in biological pharmacy, food and fine chemical engineering etc. When stirrer is started, bottom material can be stirred evenly together with water. Connection mode includes welded type and flange type.

Installation and use of 45° material discharge can ensure that material inside vessel can be discharged completely, conforming to GMP requirements. It is sanitary valve for pipelines.



DN	C	F	D1	N	D2	D3
15	70	40	13	1.5	19	25.2
20	105	64	16	1.5	43.5	50.5
25	105	64	22	1.5	43.5	50.5
32	140	85	29	1.5	43.5	50.5
40	140	85	35	1.5	43.5	50.5
50	160	94	49	1.5	56.5	64
65	195	110	59	2	70.5	77.5
70	238	120	72	2	83.5	91
80	238	120	85	2	97	106



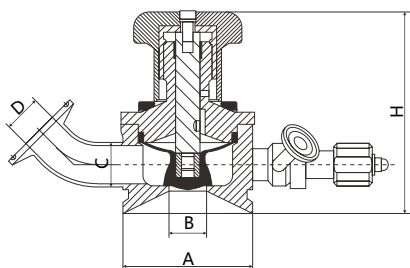
TANK BOTTOM VALVES

Characteristic

P&E series valves provide high performance liquid flow control for pharmaceutical and biopharmaceutical fluid treatment. Using hydraulic optimization design, P&E combines the inherent cleanability of flat diaphragm valve and the best characteristics of plug valve. The characteristics of both ensures that the P&E provides lowflow resistance and has a unique combination of health design verification. The P&E structure is made of durable material and ensures long service life under the requirement of working condition.

Hygienic Design Of Biological Pharmaceutical Application

P&E has a unique patented design, that is, the use of clamp fixed valve diaphragm in the valve body and the driving head of the structure. All moving parts of the drive head are isolated from the liquid treatment, and most of the specifications of the valve do not require the use of tools for disassembly or maintenance. Valve cavity and pipe connection is no blind segment from the exhaust. Compared with the traditional flat diaphragm valve, with the use of P&E products in the system, the amount of valve can be reduced by up to 30%. This leads to a reduction in the amount of liquid remaining in the pipeline system.



Size	D	A	B	H
	mm	mm	mm	mm
3/4"	19.1	60.0	16	104.0
1"	25.4	75.0	22	117.0
1.5"	38.1	85.0	35	128.5
2"	50.8	110.0	47.5	148.0

ASEPTIC SAMPLING VALVES



Valve Design Points

- All valves without dead corner design
- All valves with PTFE diaphragm, ensure clean liquid
- There is taper inside the valve, after sampling the liquid completely discharged, no residue.

Material

- Valve body: AISI 316L (1.4404)
- Valve head: AISI 304(1.4301)
- Membrane: PTFE (white)



Operating Devices

- Manual-PEX
- Automatic-Compact pneumatic actuator

Pressure (max.)




- Working pressure: 6 bar
- Rubber plug 3 bar
- Steel plug 10 bar

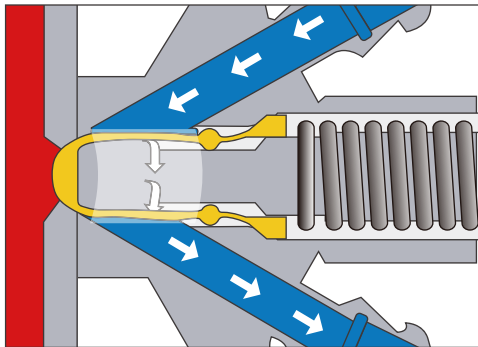
Temperature (max.)

- Sterilization temp.: 121 °C / 250°F

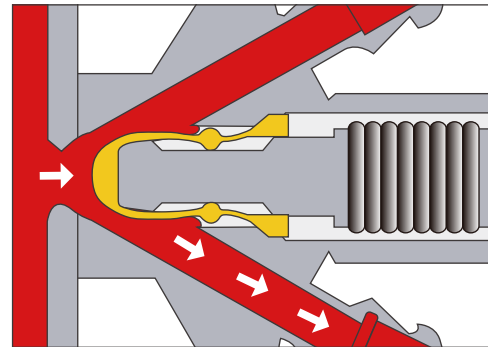


ASEPTIC SAMPLING VALVES

Body Configuration		
Weld Connection	Clamp Connection	KF- connection
		



closing valve, sterilization operating structure



opening valve , sampling operating structure

Sampling

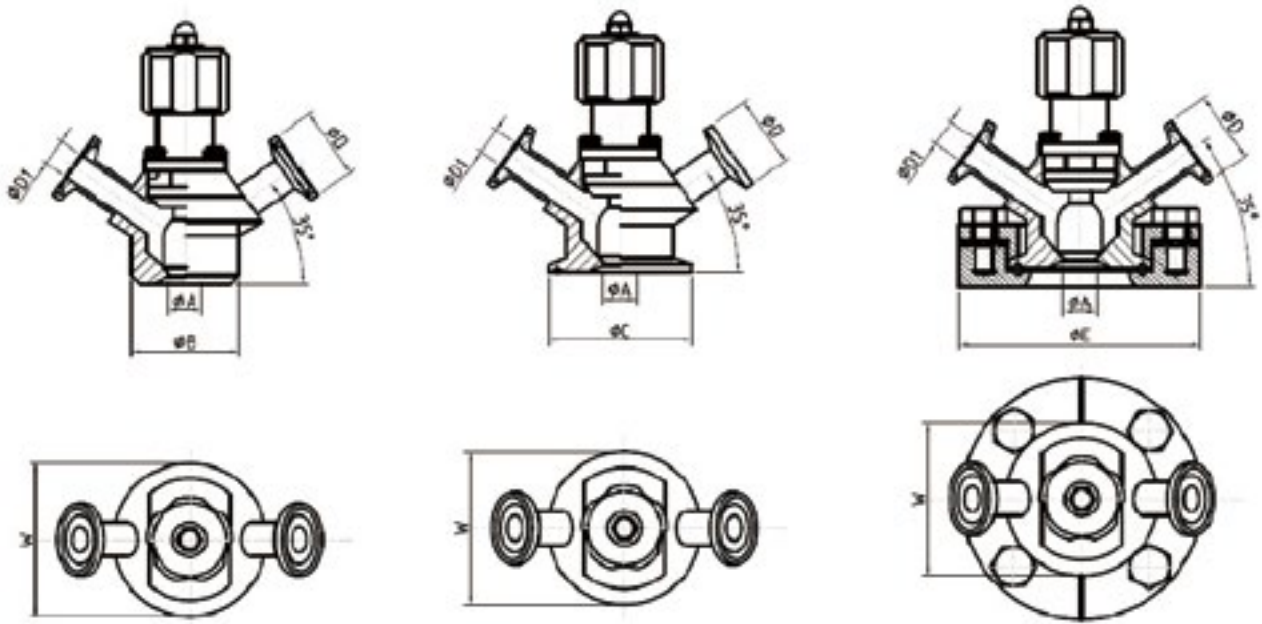
- Open valve, sampling;
- After the sampling is completed, close the valve;
- Clean the valve with steam. Please refer to "sterilization"

Sterilization

- Connect the steam hose to the upper part of the valve;
- Open the steam source, so that it flows through the valve to carry out sterilization. Last for 1 minutes at 121 °C ;
- Close the steam source;
- Remove the steam hose, then install a sterile rubber plug or sterile mask onto the upper connecting pipe.

ASEPTIC SAMPLING VALVES

Fig. 1. Dimensions - valve.

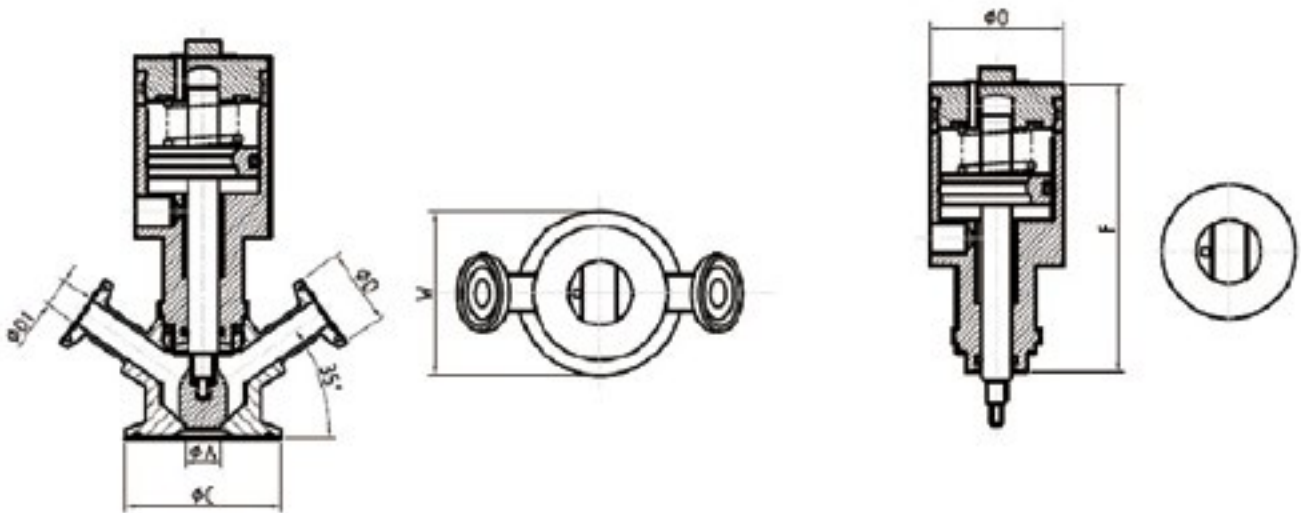


Weld connection

Clamp connection

KF- connection

Fig. 2. Dimensions - actuator



Pneumatic N/C

Size	A	B	C	D	D1	E	F	O	W
3/4"	0.236	0.75	0.99	0.99	0.196				1.51
1 1/2"	0.472	1.50	1.98	0.99	0.370	3.34	3.74	1.73	2.11

ANGLE SEAT VALVES



Features

- ◆ With open or closed position display
- ◆ External pneumatic pilot for increased service life and maintenance free
- ◆ Self-adjusting sealing gland between the overflow port and the slider for improved sealing performance.
- ◆ The valve body angle seat structure can realize large flow rate (especially compared with ordinary stop valve), and the structure is compact and fast.
- ◆ Large flow, small flow resistance, no water hammer
- ◆ Y-type design, increasing flow by 30%
- ◆ Long life
- ◆ Seat automatic calibration, self-lubricating, maintenance free
- ◆ The cylinder is made of stainless steel or PA (polyacrylic acid) to meet the needs of harsh environments
- ◆ It can be installed at any position and can be rotated 360 degrees

Technical Parameters

Pressure range: 0~16 bar

Medium temperature: -10°C~+180°C

Ambient temperature: -100°C~+600°C

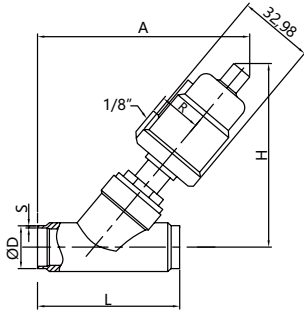
Valve material: SUS316L

Seal material: Poly tetra fluoroethylene PTFE

Control gas: neutral gas, air

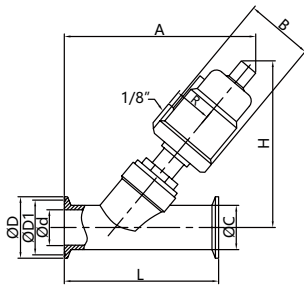
ANGLE SEAT VALVES

Stainless Steel Angle Seat Valve



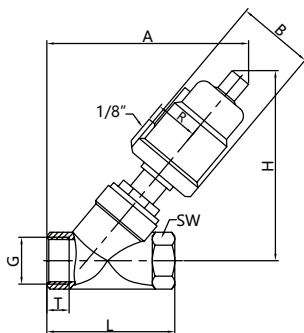
Size	Actuator	B	R	H	D	S	A	L
1/2"	40	50.5	27	112	12.7	1.65	118	70
	50	60	33	125			128	
1"	50	60	33	136	25.4	1.65	150	100
	63	75	41	162			175	
	90AL	112	57	210			216	
	90	106	55	211			218	
1 1/4"	63	75	41	174	31.75	1.65	186	125
	90AL	112	57	220			230	
	90	106	55	223			232	
1 1/2"	63	75	41	175	38.1	1.65	190	130
	90AL	112	57	220			232	
	90	106	55	223			235	
2"	63	75	41	183	50.8	1.65	206	155
	90AL	112	57	232			247	
	90	106	55	232			250	
	125AL	148	74	287			250	

Tri-clamp Angle Seat Valve



Size	Actuator	D	D1	C	d	L	A	H
3/4"	50	25.2	27.5	19.1	15.8	80	140	126
1"	50	50.5	43.5	25.4	22.1	130	165	140
	63						188	166
1.25"	63	50.5	43.5	31.8	28.5	146	200	174
	90						245	223
1.5"	63	50.5	56.5	38.1	34.8	160	210	175
	90						255	223
2"	63	64	56.5	50.8	47.5	175	221	185
	90						265	235

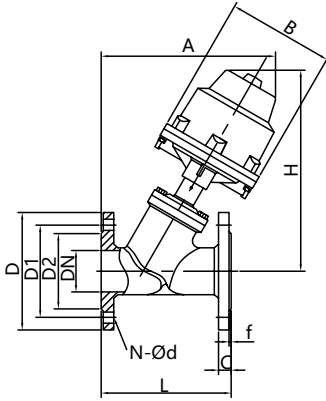
Stainless Steel Angle Seat Valve



Size	Actuator	B	R	H	G	T	A	L	SW
3/8"	40	50.5	27	112	3/8"	12	124	68	27
	50	60	33	125			135		
1/2"	40	50.5	27	112	1/2"	15	124	68	27
	50	60	33	125			135		
1"	50	60	33	136	1"	17	150	90	40
	63	75	41	162			172		
	90AL	112	57	210			215		
	90	106	55	211			216		
1 1/4"	63	75	41	174	1 1/4"	21	190	116	50
	90AL	112	57	220			230		
	90	106	55	223			235		
1 1/2"	63	75	41	175	1 1/2"	21	190	116	56
	90AL	112	57	220			230		
	90	106	55	223			235		
2"	63	75	41	183	2"	26	205	138	69
	90AL	112	57	232			245		
	90	106	55	232			250		
	125AL	148	74	287			294		
2 1/2"	90AL	112	57	262	2 1/2"	26	282	178	85
	90	106	55	265			285		
	125AL	148	74	302			320		
3"	125AL	148	74	313	3"	27	372	210	100

ANGLE SEAT VALVES

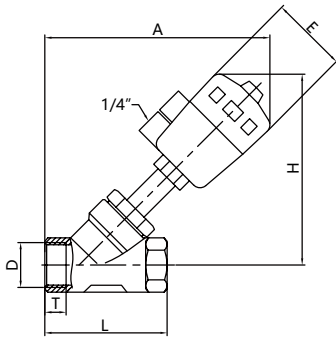
Angle Seat Valve(Bolted Bonnet)



Size	Actuator	L	C	F	D
2 1/2"	Ø125	203	18	3	180
3"	Ø125	241	20	3	195
3"	Ø160	241	20	3	195
4"	Ø160	254	20	3	215

D1	D2	A	H	B	N-Ød
145	120	275	318	168	4-Ø18
160	135	302	345	168	8-Ø18
160	135	330	380	220	8-Ø18
180	155	338	395	220	8-Ø18

Pneumatic Threaded Angle Seat Valve



Size	Actuator	L	A	H	D	E
3/8"	Ø50	65	165	120	3/8"	64
1/2"	Ø50	86	172	137	1/2"	64
3/4"	Ø50	95	178	145	3/4"	64
1"	Ø50	105	210	165	1"	64
1 1/4"	Ø63	120	220	180	1 1/4"	80

PRESSURE/VACUUM RELIEF VALVES



Working Principle

When the internal pressure of the container is higher than the set pressure, the valve will automatically open to exhaust air to the outside of the container, and otherwise it will be closed;

When vacuum pressure is generated in the container, the valve will automatically open (standard vacuum <0.9ber), the container will absorb air; the valve remains normally closed.

Calibration Range

Pressure: 0.2 to 3 bar

Pressure: 2.8 PSI to 43.5 PSI
(depending on model)

Vacuum: 0.01 to 0.05 bar

Vacuum: 0.15 PSI to 0.75 PSI
(depending on model)

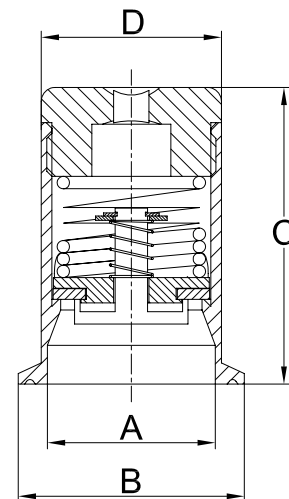
Available Seal Types

The following seal types can be mounted on your valve:
FOOD-GRADE SILICONE, VITON

Please contact our Technical Department to define the seal type suited to your process.

Pneumatic Threaded Angle Seat Valve

Size	A	B	C	D
	mm	mm	mm	mm
Φ34	25	34	49	30.5
1.0"	25	50.5	49	30.5
1.5"	35	50.5	72	42
2.0"	47	64	85	51
2.5"	59	78	90	64
3.5"	83	105	135	88



If you want to check for more details please check the following drawing

*1bar ≈ 14.5psi ≈ 0.1mpa



SIGHT GLASSES & SPRAY BALLS

SIGHT GLASS

Sight glasses provide a clear view of product flow through process lines. Made with borosilicate glass and sealed with buna gaskets, various end configurations are available including: clamp, bevel seat, I-line, Q-line, and John Perry. P&E Brien offers many styles of sight glass including bolt style and socket head cap screw style. Bolt style sight glasses can also be supplied with a protective acrylic shield to prevent breakage of the glass from inadvertent contact.



Design and features

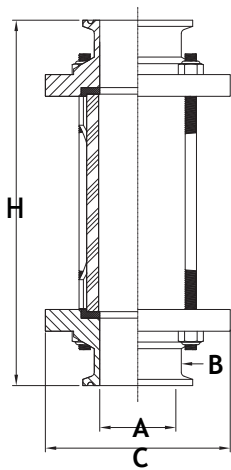
- Sizes: 1"–4".
- Full bore design.
- 360° viewing angle.
- Can be used in vertical or horizontal position.

Materials

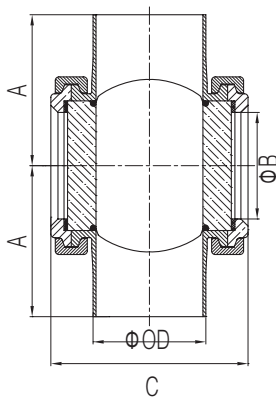
- Protective net: AISI304
- Glass: tempered glass
- Gasket: VMQ FDA177.2600
- Surface treatment: CNC machining

Technical specifications

- Working temp: – 10°C to 120°C (Silicone)
- Max. operating pressure (bar)



Size	A	B	C	H
1.0"	22.1	25.4	76	162
1.5"	31.8	38.1	85	166
2.0"	47.5	50.8	100	170
2.5"	60.2	63.5	112	174
3.0"	72.9	76.2	125	174
4.0"	97.38	101.6	162	192



Size	A	B	C	OD
1.5"	65	38	80	38.1
2.0"	75	50	97	50.8
2.5"	85	63.5	111	63.5
3.0"	95	73	124	76.2
4.0"	120	100	149	101.6

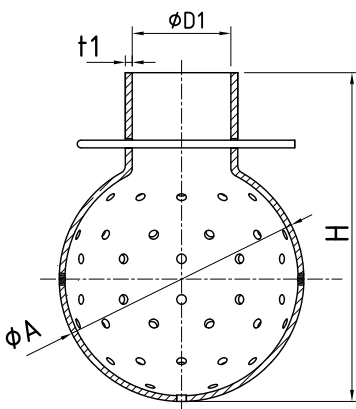
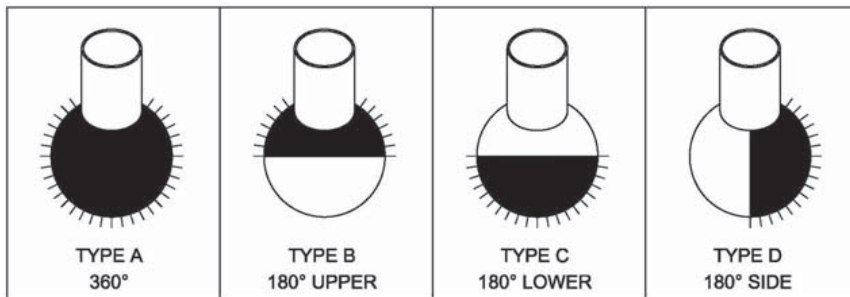
SPRAY BALL



Spray balls are available in various spray patterns as shown. They are stationary and meant to be mounted to a tube or pipe. Typical uses are in the food and beverage industries for cleaning storage tanks.

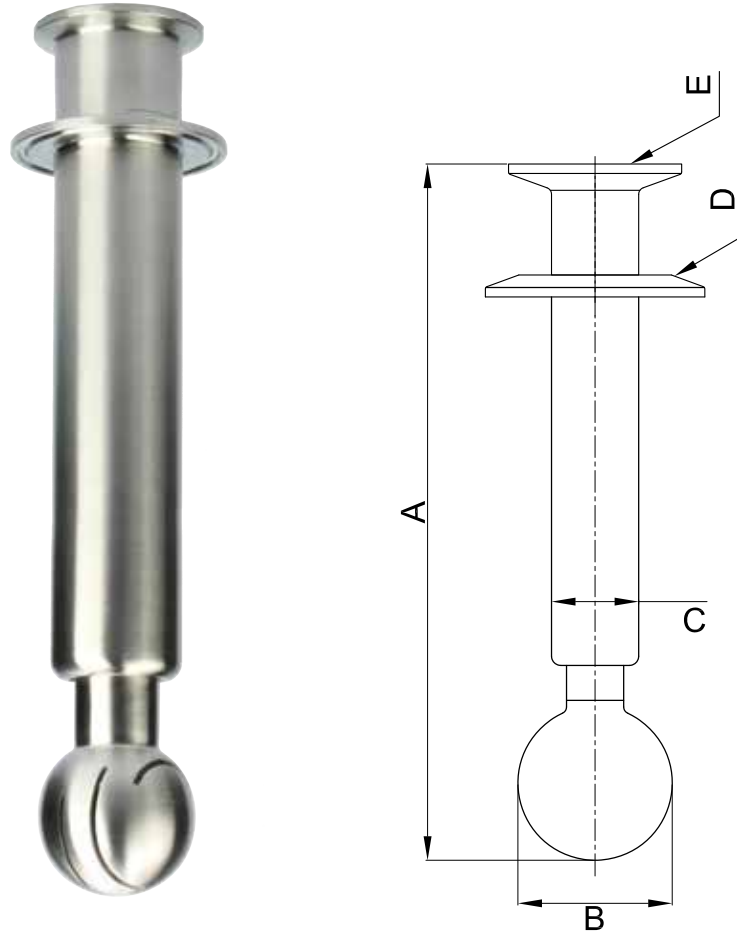
Made with heavy gauge material for longer life, they are available in both 304 & 316L grades.

SPRAY PATTERNS:



Size	D1	t1	A	H
1"	25.8	1.8	64	86
1 1/2"	38.4	1.8	75	97.6
2"	51.2	2.3	90	112

ROTARY SPRAY BALL



Size	A	B	C	D	E
11"×2.5"×1.5"	11"(279.4mm)	2"(50.8mm)	1.5"(38.1mm)	2.5" TC	1.5" TC
16"×2.5"×1.5"	16"(406.4mm)	2"(50.8mm)	1.5"(38.1mm)	2.5" TC	1.5" TC
24"×2.5"×1.5"	24"(609.6mm)	2"(50.8mm)	1.5"(38.1mm)	2.5" TC	1.5" TC
24"×3"×1.5"	24"(609.6mm)	2"(50.8mm)	1.5"(38.1mm)	3" TC	1.5" TC

Technical Data

Size	Pressure (bar)	Cleaning radius(m)	Fluxation m ³ /h
2	2	1.5	38



FILTERS

FILTERS



Application

Filters have a wide range of applications in the food-processing, cosmetics and some chemical industries as well as in auxiliary services of the pharmaceutical industry. They have a hygienic design and are used to filter particles which may damage pumps and other equipments.

Operating Principle

The filter basically consists of a filter body with an inlet and an outlet for the product. The screen is fixed inside the body. The screen retains all particles that are equal or larger than the size of the screen openings.

Design And Features

There are several configurations:

- Cleaning of the screen without disassembling the filter:

Angular filter (82700): the inlet and the outlet form a right angle.

Y filter (83700): the product enters and leaves the filter in the same direction.

- Cleaning of the screen: need to disassemble the filter.

Straight filter (81700): the product enters and leaves the filter in the same direction.

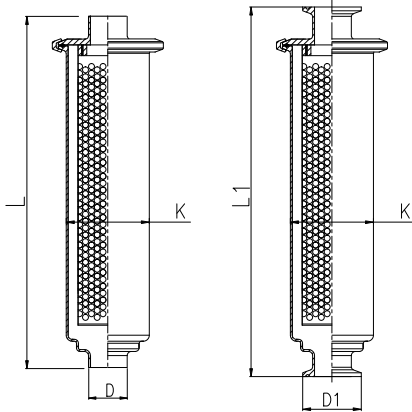
Low pressure drops.

Connections: DIN EN 10357 series A and ASTM A269/270 (corresponds to OD pipe).

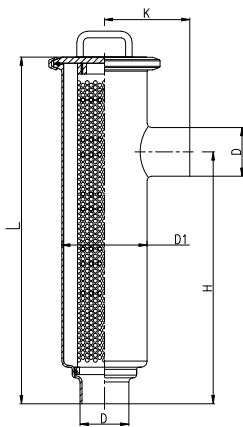
Screen with circular (from \varnothing 0,5 mm to \varnothing 5 mm) or longitudinal openings (10 x 1 mm).

FILTERS

Straight Filter

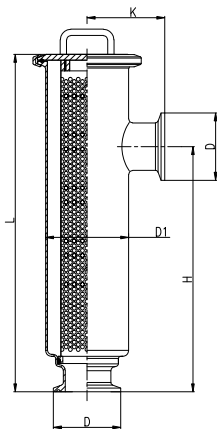


Weld / Clamp					
Size	ØD	ØD1	ØK	L (Weld)	L1(Clamp)
1"	25.4	50.5	76.2	299.6	325
1½"	38.1	50.5	76.2	299.6	325
2"	50.8	64.0	101.6	334.6	360
2½"	63.5	77.5	101.6	369.6	395
3"	76.2	91.0	114.3	426.6	452
4"	101.6	119	139.7	614.6	640



Weld					
Size	ØD	ØD1	K	H	L
1"	25.4	76	76	249	344
1½"	38.1	76	76	249	344
2"	50.8	89	89	264	369
2½"	63.5	101.6	101.6	330	460
3"	76.2	114.3	114.3	365	510
4"	101.6	140	140	470	640

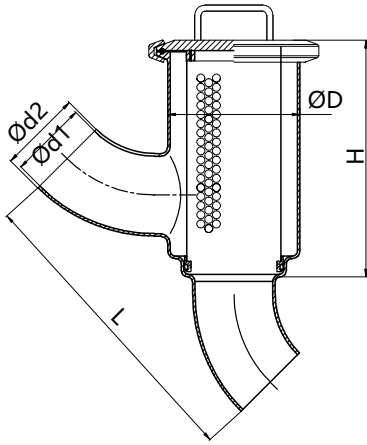
Angular Filter



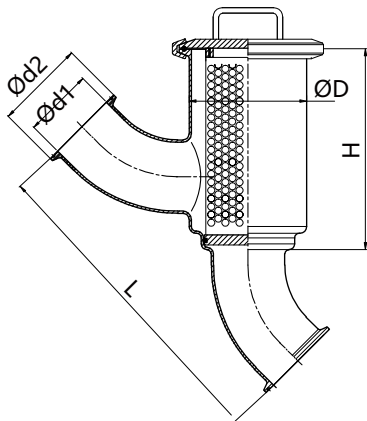
Clamp					
Size	ØD	ØD1	K	H	L
1"	50.5	76	88.7	261.7	356.7
1½"	50.5	76	88.7	261.7	356.7
2"	64.0	89	101.7	276.7	381.7
2½"	77.5	101.6	114.3	342.7	472.7
3"	91.0	114.3	127	377.5	522.7
4"	119.0	140	156	486	656

FILTERS

Y Filter

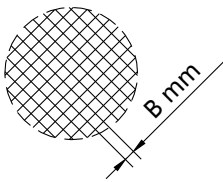


Weld					
Size	Ød1	Ød2	ØD	L	H
1"	22.1	25.4	76	115	92
1½"	34.8	38.1	76	160	147
2"	47.5	50.8	89	195	150
2½"	60.2	63.5	102	240	184
3"	72.9	76.2	114.3	270	209
4"	97.4	101.6	140	262	272



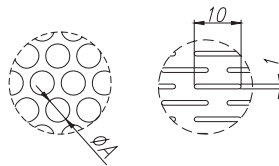
Clamp					
Size	Ød1	Ød2	ØD	L	H
1"	22.1	50.5	76	200	138
1½"	34.8	50.5	76	185	138
2"	47.5	64.0	89	225	153
2½"	60.2	77.5	102	275	173
3"	72.9	91.0	114.3	305	193
4"	97.4	119.0	140	391	258

Metal Mesh



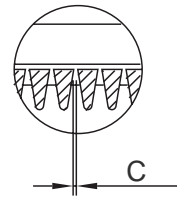
Mesh equiv.	B (mm)	Useful surface (%)
30	0.55	48
40	0.40	46
60	0.30	52.6
80	0.20	42
100	0.15	36.2
165	0.10	45.4

Perforated Plate



A (mm)	Useful surface (%)
0.5	15
1	28
1.5	33
2	30
3	33
5	46

Wedge Wire



Mesh equiv.	B (mm)	Useful surface (%)
30	0.55	48
40	0.40	46
60	0.30	52.6
80	0.20	42
100	0.15	36.2
165	0.10	45.4



P&E TECHNOLOGY

Provide customers with most
precise and efficient solution
and make the world work better.

www.pestainless.com